

PERFORMANCE BY



INSTALLATION GUIDE

IE CHARGE PIPES FOR AUDI B9 A4

IETPCK7



This installation guide is for instructional purposes only. For best results, professional installation by an experienced technician is always recommended. By reading this guide you agree Integrated Engineering is not responsible for any damage or personal injury caused by incorrect installation.

DIFFICULTY



Expect 1- 2 hours on average

REQUIRED TOOLS

- 17mm socket
- 13mm socket
- T25
- T30
- Clip removal tool
- Pick
- Flathead Screwdriver
- 4mm allen

BEFORE YOU BEGIN

It is highly recommended to pre-read this entire guide ahead of your installation to familiarize yourself with each step. Always park your vehicle in a safe and level location and allow plenty of time for the engine bay and exhaust to completely cool. Locate and prepare your work space with each required tool listed above. Unbox all components and verify the contents and quantities before you begin. If anything is missing or damaged, please contact us for immediate help at support@performancebyie.com

SPECIAL NOTE:

This install guide has been photographed and written on a 2018 Audi B9 A4 Allroad. Some steps and factory hardware specifications may vary depending on vehicle model, year, and region. This guide is for reference purposes only. If you are unsure of the installation procedure for any individual step or part, please seek professional help before proceeding.



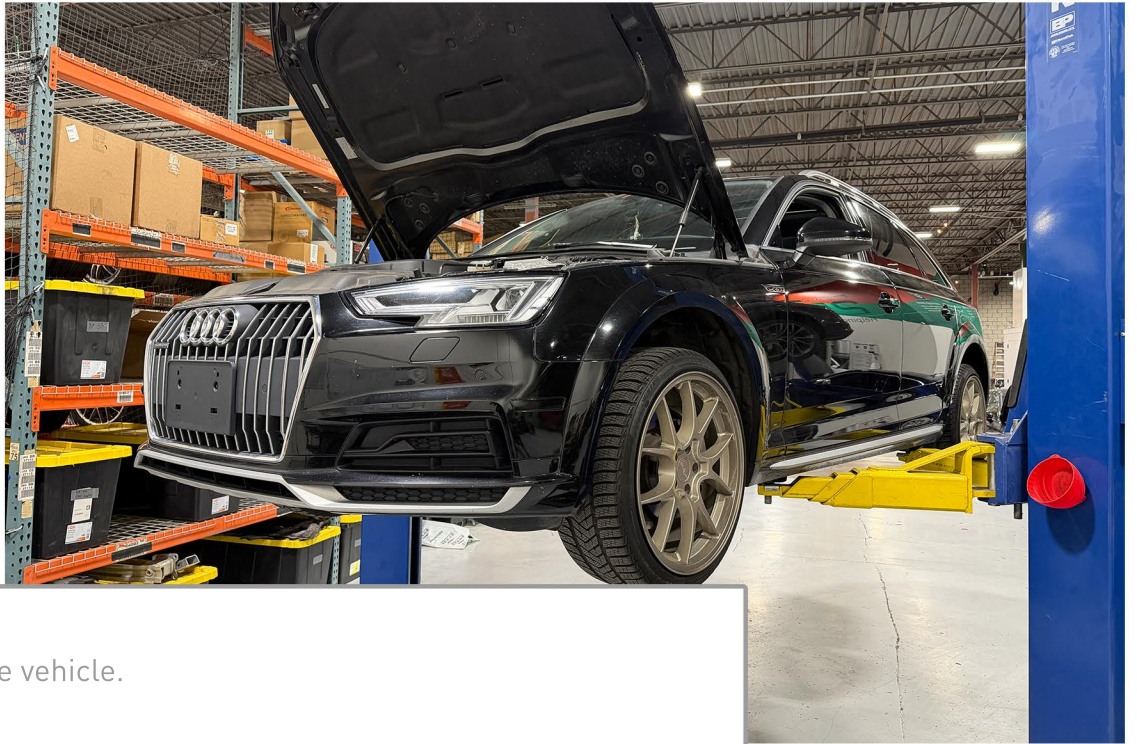
INCLUDED PARTS

- 01 - CHARGE PIPE (1X)
- 02 - SILICONE CHARGE HOSE (1X)
- 03 - SILICONE COUPLER (1X)
- 04 - REDUCING SILICONE COUPLER (1X)
- 05 - CLAMP 2-5/16" - 3-1/4" (5X)
- 06 - CLAMP 1-13/16" - 2" (1X)
- 07 - M6 X 20MM BOLT (2X)
- 08 - M6 FLAT WASHER (2X)

Some items may be partially assembled.



01



Safely jack up the vehicle.

02



Remove the front wheels.

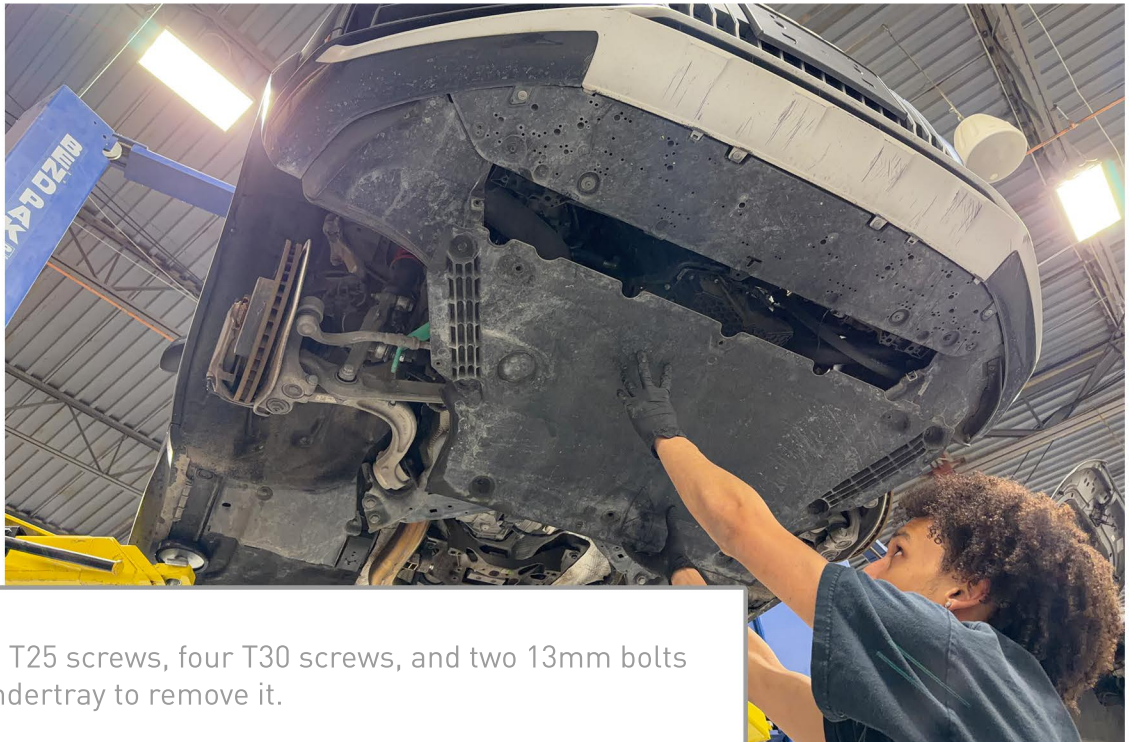


03



Remove the seven T25 screws from the wheel liner on each side of the vehicle to peel back the liner.

04



Remove the nine T25 screws, four T30 screws, and two 13mm bolts from the front undertray to remove it.

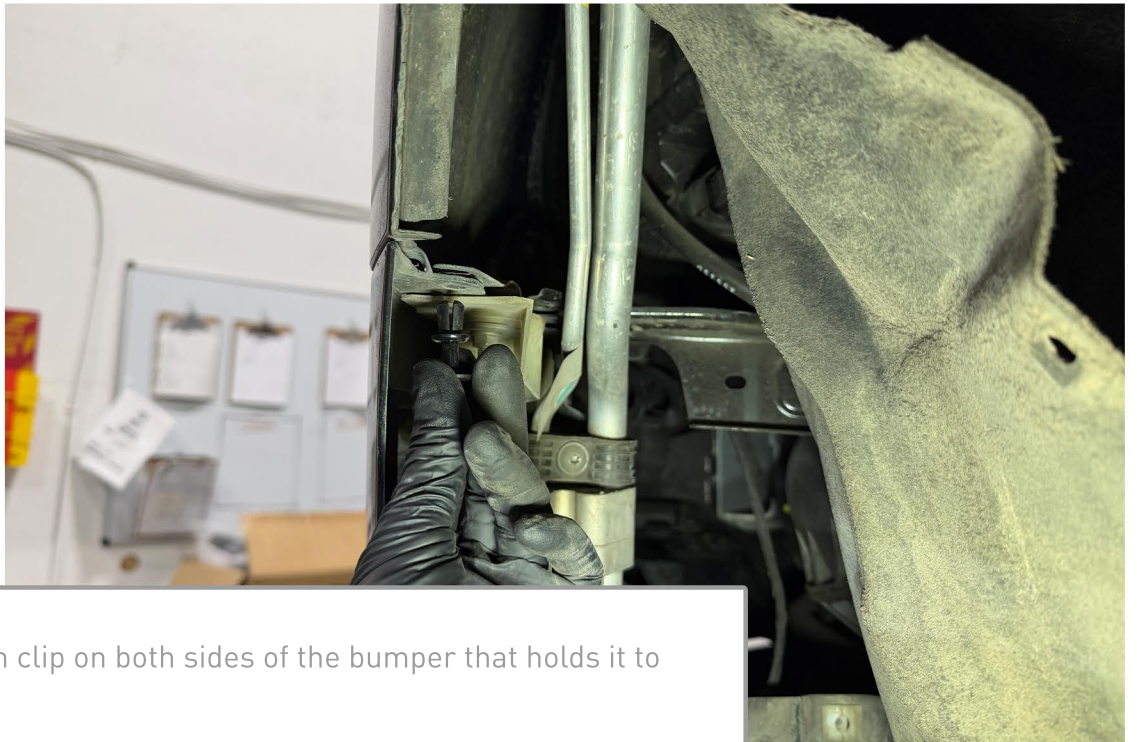


05



Remove the three T25 screws and four T30 screws holding the bottom of the bumper to the core support.

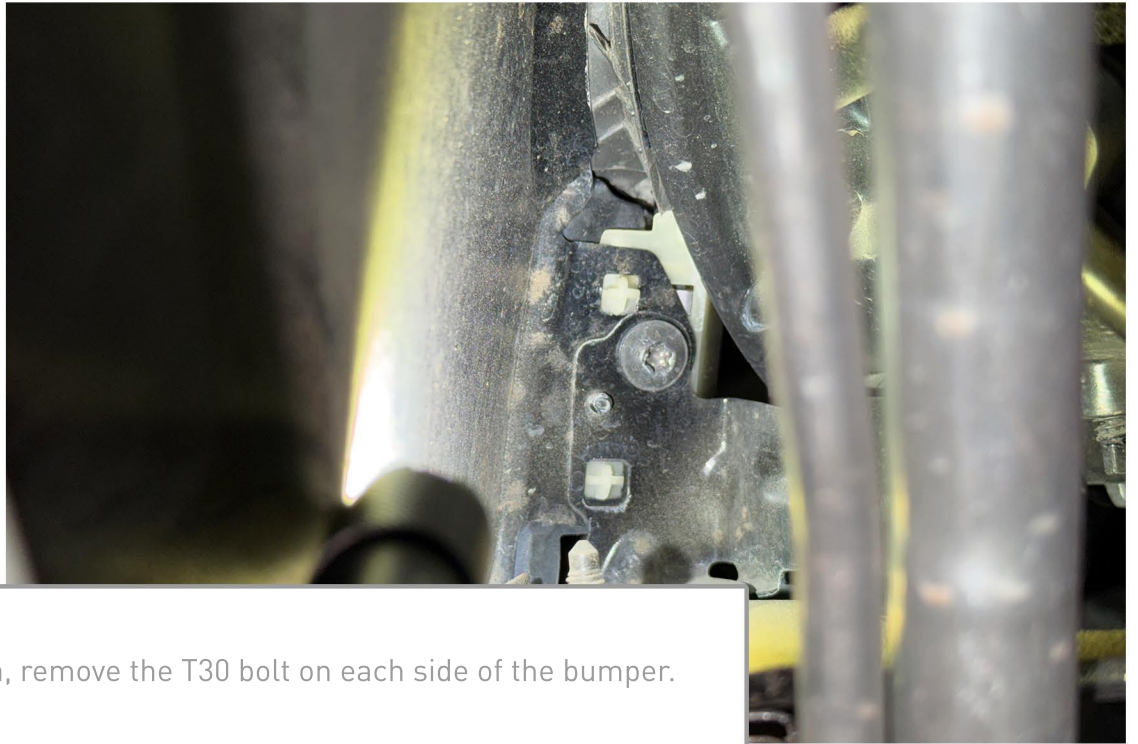
06



Remove the push clip on both sides of the bumper that holds it to the fender.



07



In the same area, remove the T30 bolt on each side of the bumper.

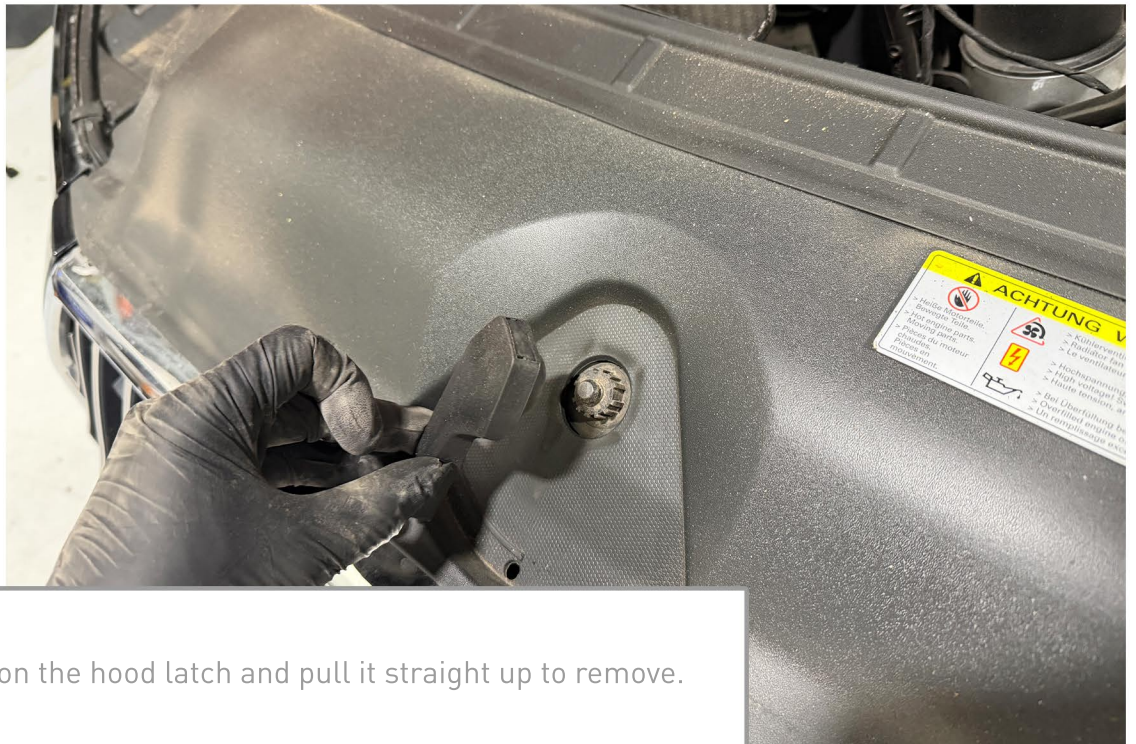
08



Carefully pull out each corner of the bumper (do not remove the bumper completely yet).

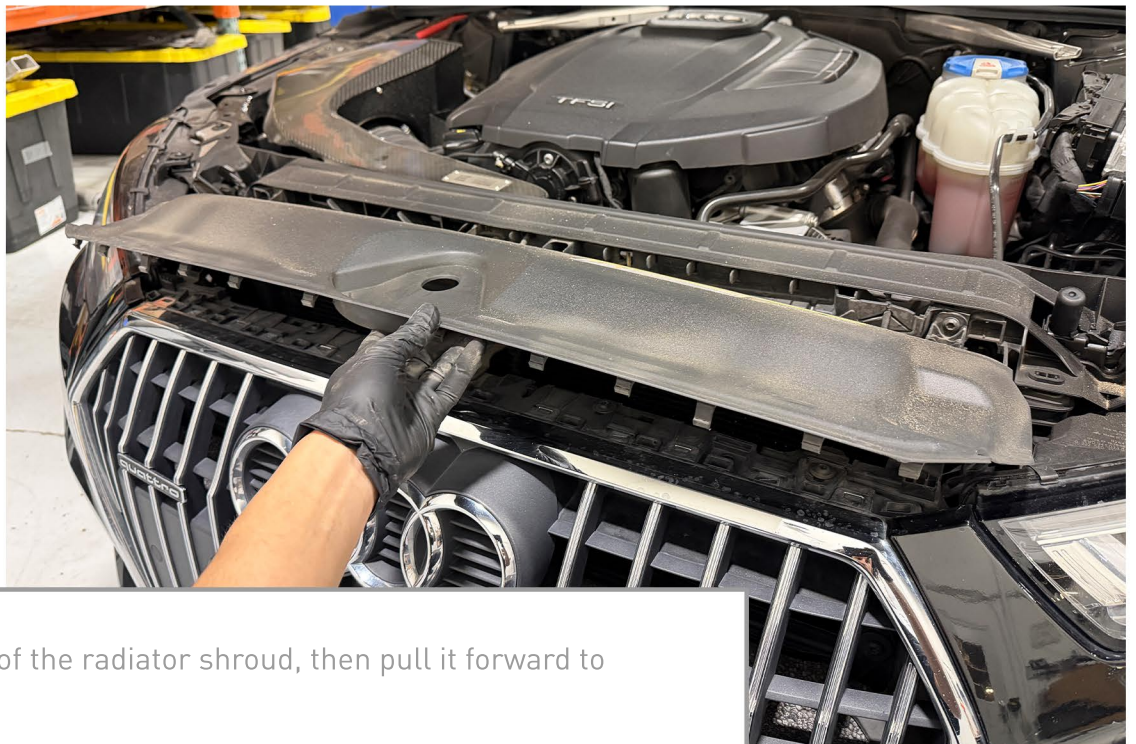


09



Press in the tab on the hood latch and pull it straight up to remove.

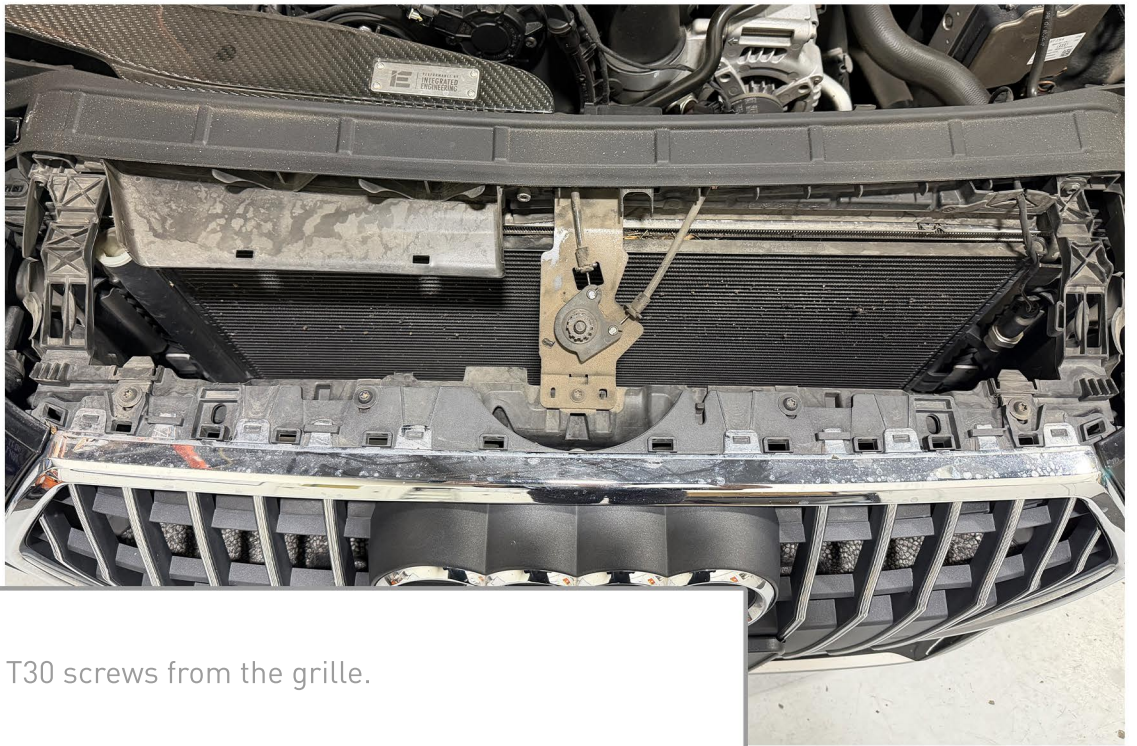
10



Pry up the front of the radiator shroud, then pull it forward to remove.

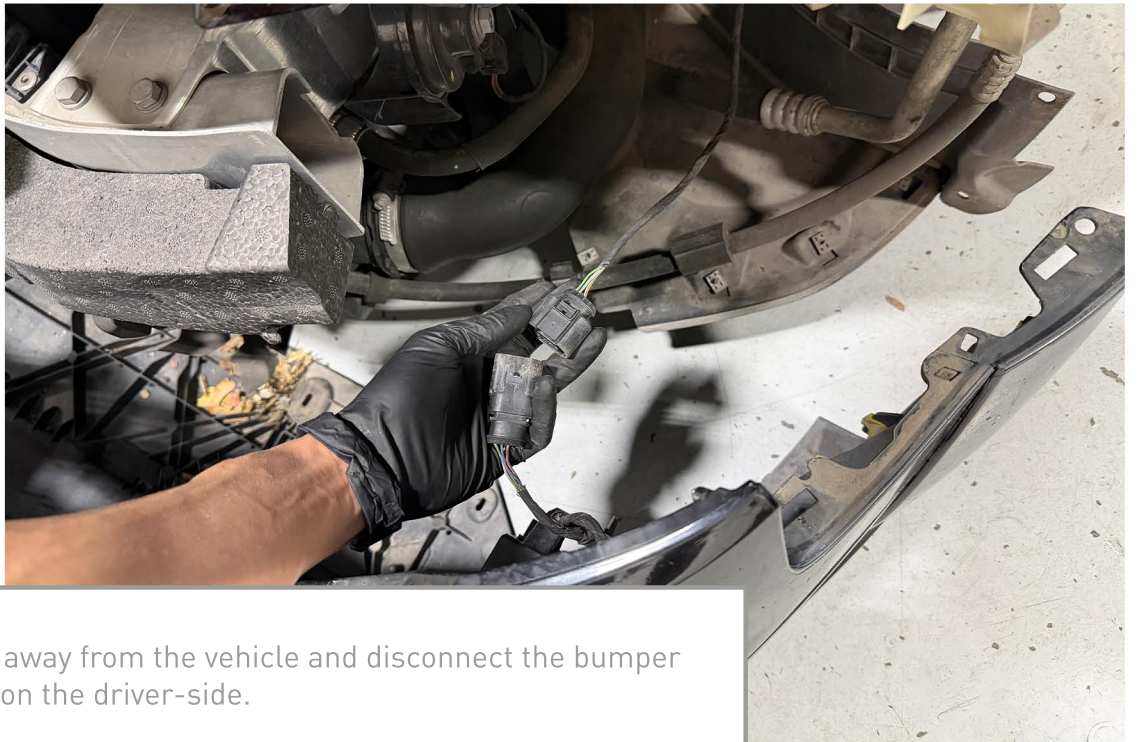


11



Remove the four T30 screws from the grille.

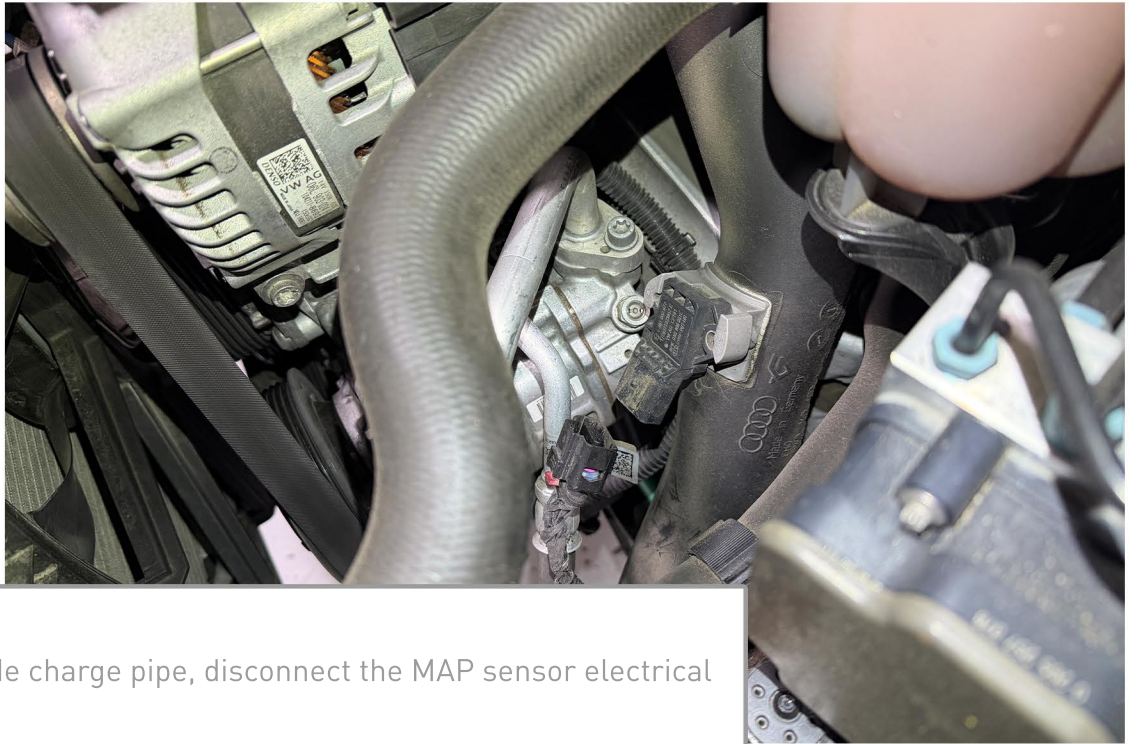
12



Pull the bumper away from the vehicle and disconnect the bumper harness located on the driver-side.



13



On the driver-side charge pipe, disconnect the MAP sensor electrical connector.

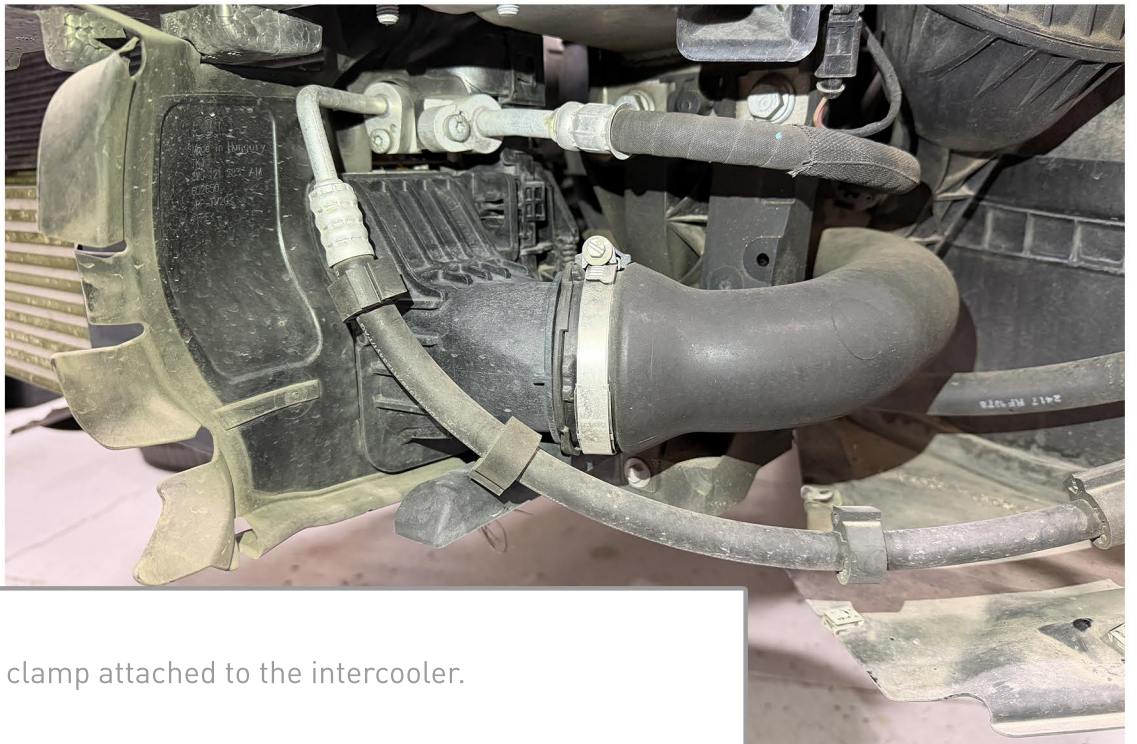
14



On the same side, loosen the hose clamp attached to the throttle body.

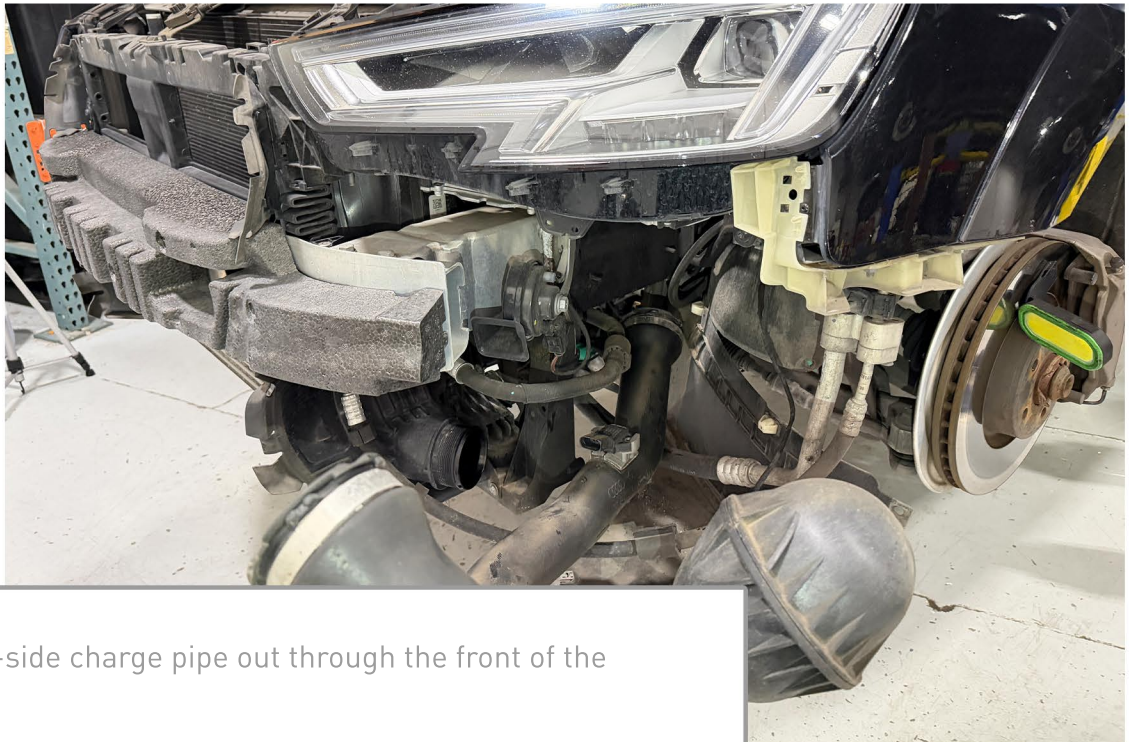


15



Loosen the hose clamp attached to the intercooler.

16



Guide the driver-side charge pipe out through the front of the vehicle.

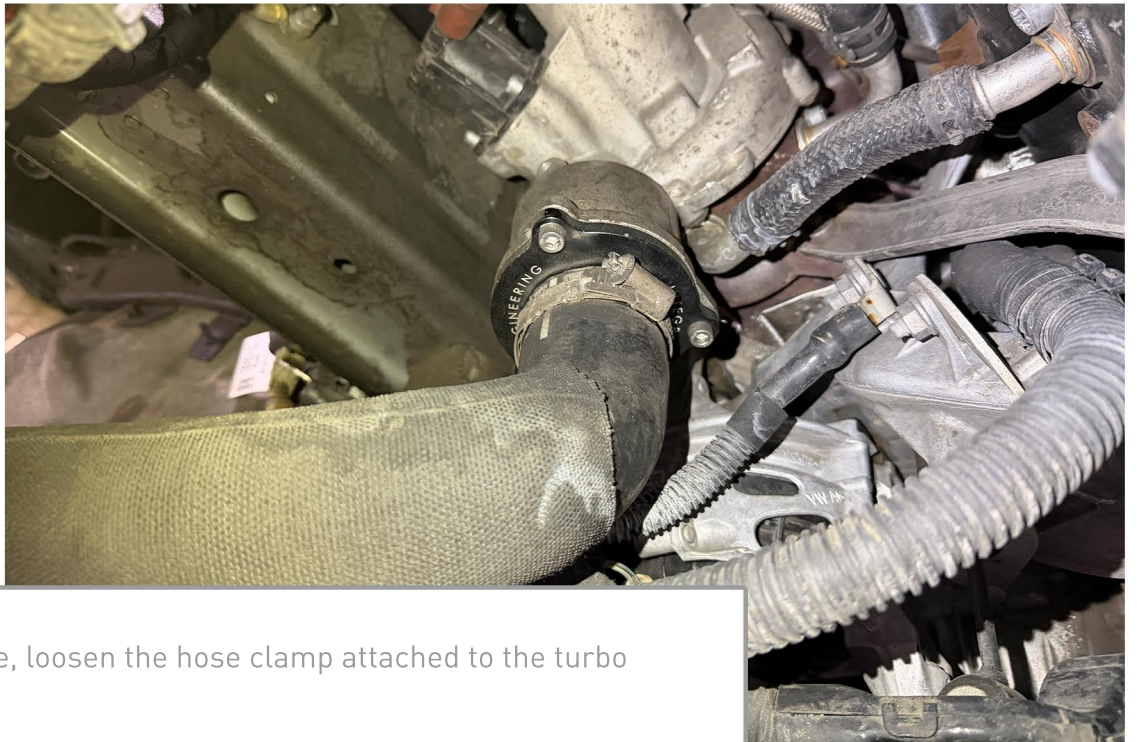


17



On the passenger side, loosen the hose clamp attached to the intercooler.

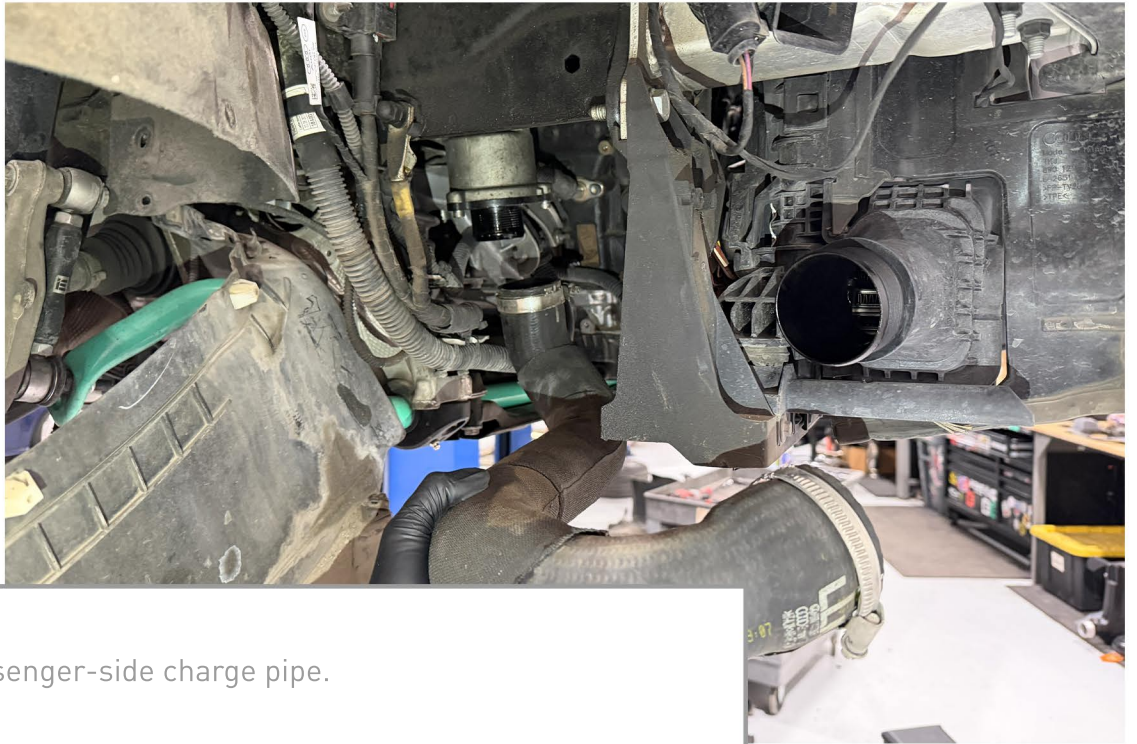
18



On the same side, loosen the hose clamp attached to the turbo outlet.

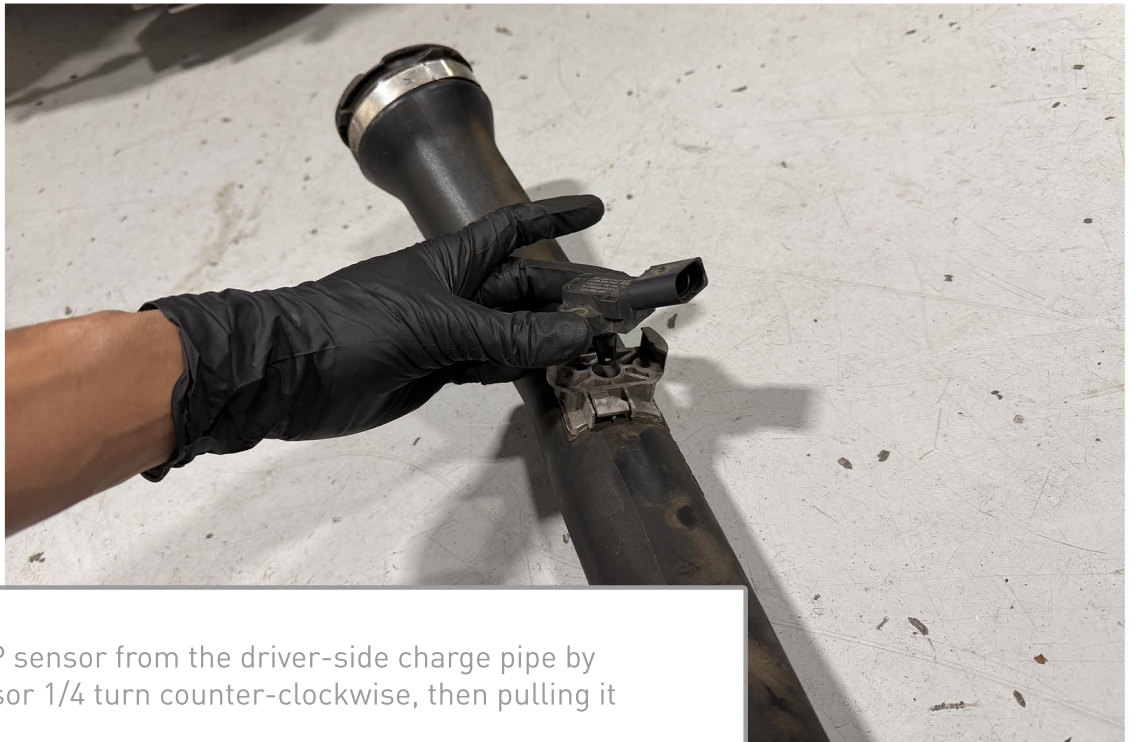


19



Remove the passenger-side charge pipe.

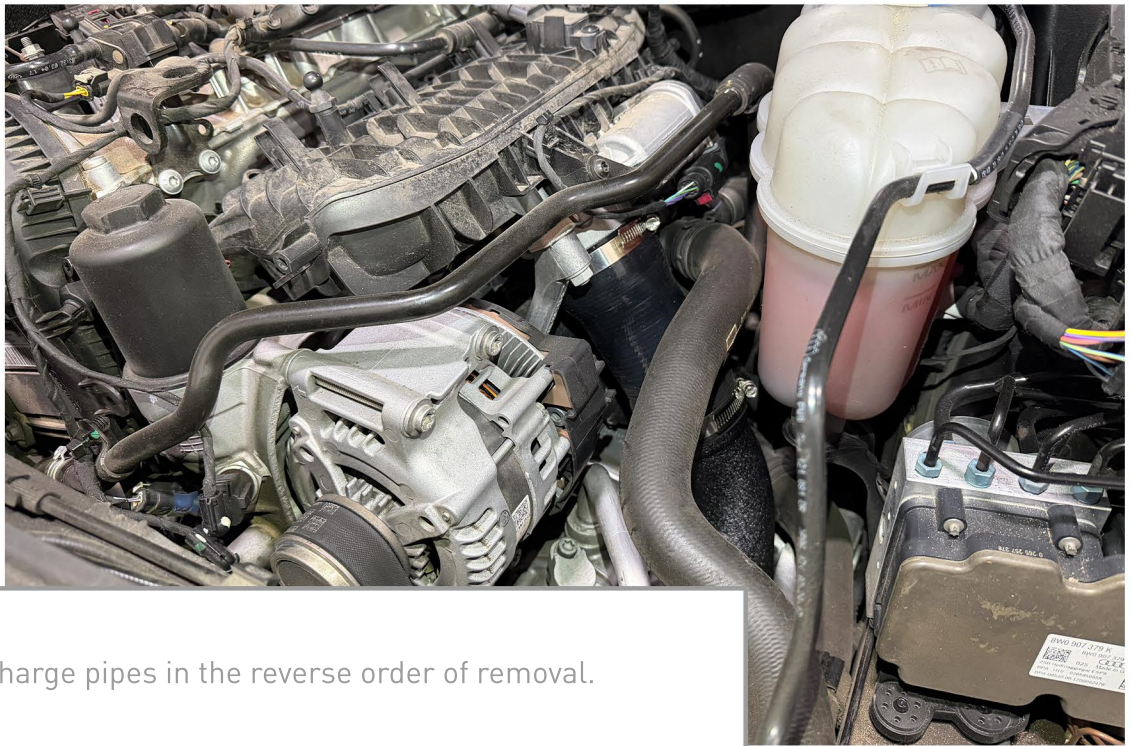
20



Remove the MAP sensor from the driver-side charge pipe by twisting the sensor 1/4 turn counter-clockwise, then pulling it straight up.



21a



Install the new charge pipes in the reverse order of removal.

21b



Here is a secondary perspective to help with reinstallation and routing.

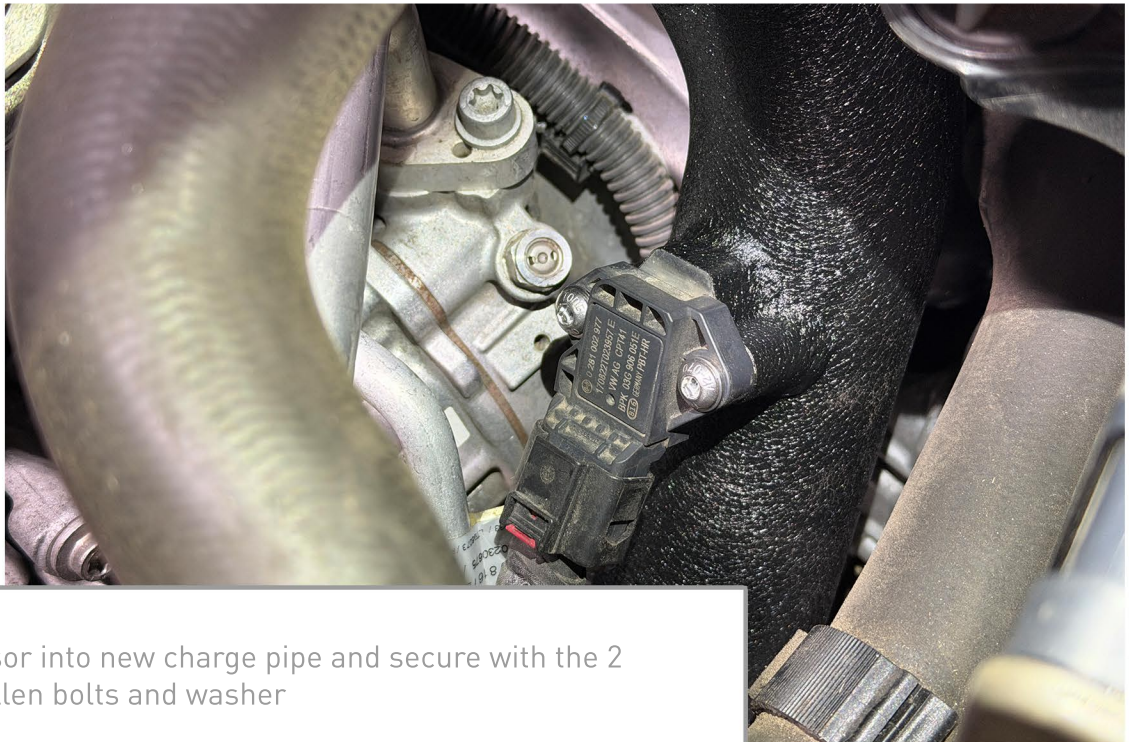


21c



Here is a third perspective to help with reinstallation and routing.

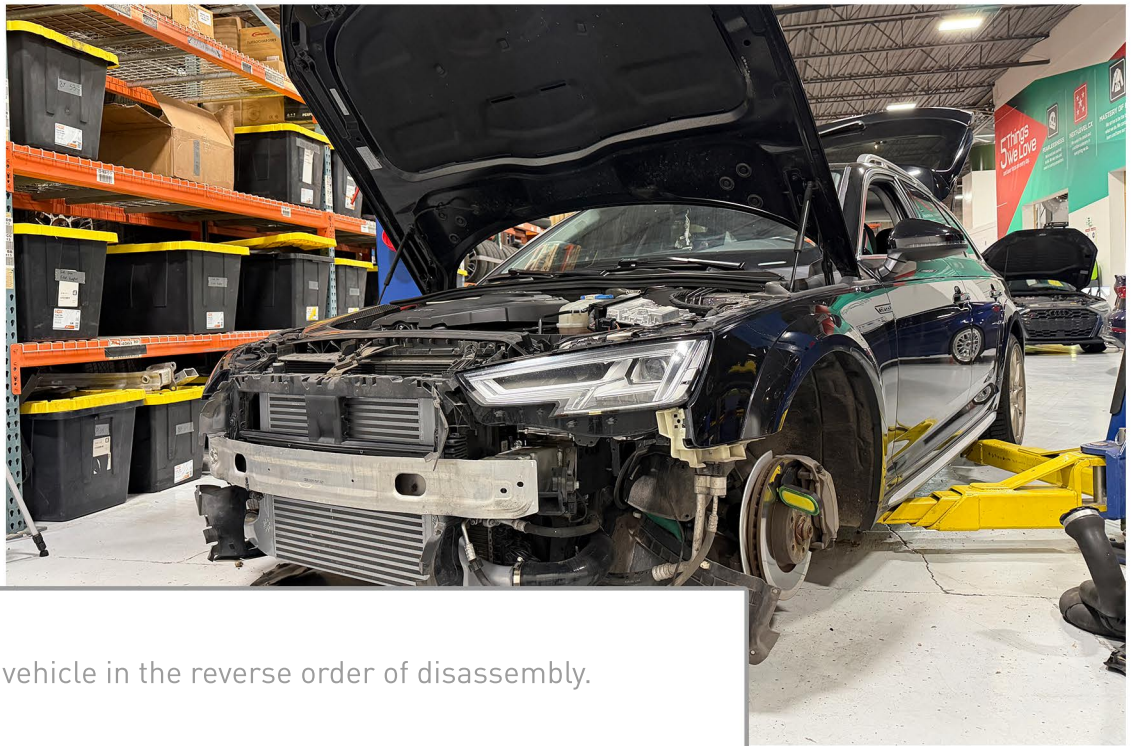
22



Install MAP sensor into new charge pipe and secure with the 2 provided 4mm allen bolts and washer



23

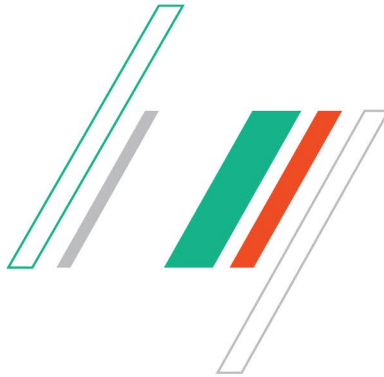


Reassemble the vehicle in the reverse order of disassembly.



ENJOY!

Thank you for purchasing an Integrated Engineering product. We are dedicated to serving your performance needs. Please check our website frequently for new product releases. If you have any questions or concerns about this product please do not hesitate to contact us.



HOW WAS YOUR INSTALL?



Stoked?

Awesome! Please leave a review.
share.performancebyie.com



Bummed?

Sorry, let us make it right.
support.performancebyie.com



801.484.2021

WWW.PERFORMANCEBYIE.COM

SUPPORT@PERFORMANCEBYIE.COM



Brother owned since 2007.
Garage started for beer money.

performancebyie.com

Don't be shy. Share your project.



#LiveFastBuyFun