



# Xodus



## INSTALLATION GUIDE

### **XODUS HIGH-FLOW TURBO ADAPTERS FOR FORD F150 & RAPTOR 3.5L ECOBOOST**

IEINDA1

[Help@DriveXodus.com](mailto:Help@DriveXodus.com)

[DriveXodus.com](http://DriveXodus.com)

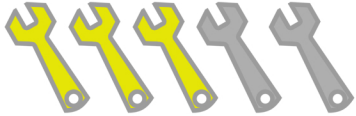




This installation guide is for instructional purposes only. For best results, professional installation by an experienced technician is always recommended. By reading this guide you agree Integrated Engineering is not responsible for any damage caused by incorrect installation.

## DIFFICULTY

---



Expect 3-4 hours on average

## REQUIRED TOOLS

---

- 10, 13, 14, 15, and 21mm socket
- Universal Joint Adapter
- Extensions
- 10, 15, and 18mm wrench
- Hammer
- 22mm wrench or O2 sensor socket
- Rubber Mallet
- Stud Extractor
- 4mm allen

## BEFORE YOU BEGIN

---

It is highly recommended to pre-read this entire guide ahead of your installation to familiarize yourself with each step. Always park your vehicle in a safe and level location and allow plenty of time for the engine bay and exhaust to completely cool. Locate and prepare your work space with each required tool listed above. Unbox all components and verify the contents and quantities before you begin. If anything is missing or damaged, please contact us for immediate help at [help@drivexodus.com](mailto:help@drivexodus.com)

## REQUIRED PARTS

---

- No additional parts are required for this install

## OPTIONAL PARTS

---

### SPECIAL NOTE:

This install guide has been photographed and written on a 2019 Ford F-150 Raptor. Some steps and factory hardware specifications may vary depending on vehicle model, year, and region. This guide is for reference purposes only. If you are unsure of the installation procedure for any individual step or part, please seek professional help before proceeding.

# INCLUDED PARTS

---

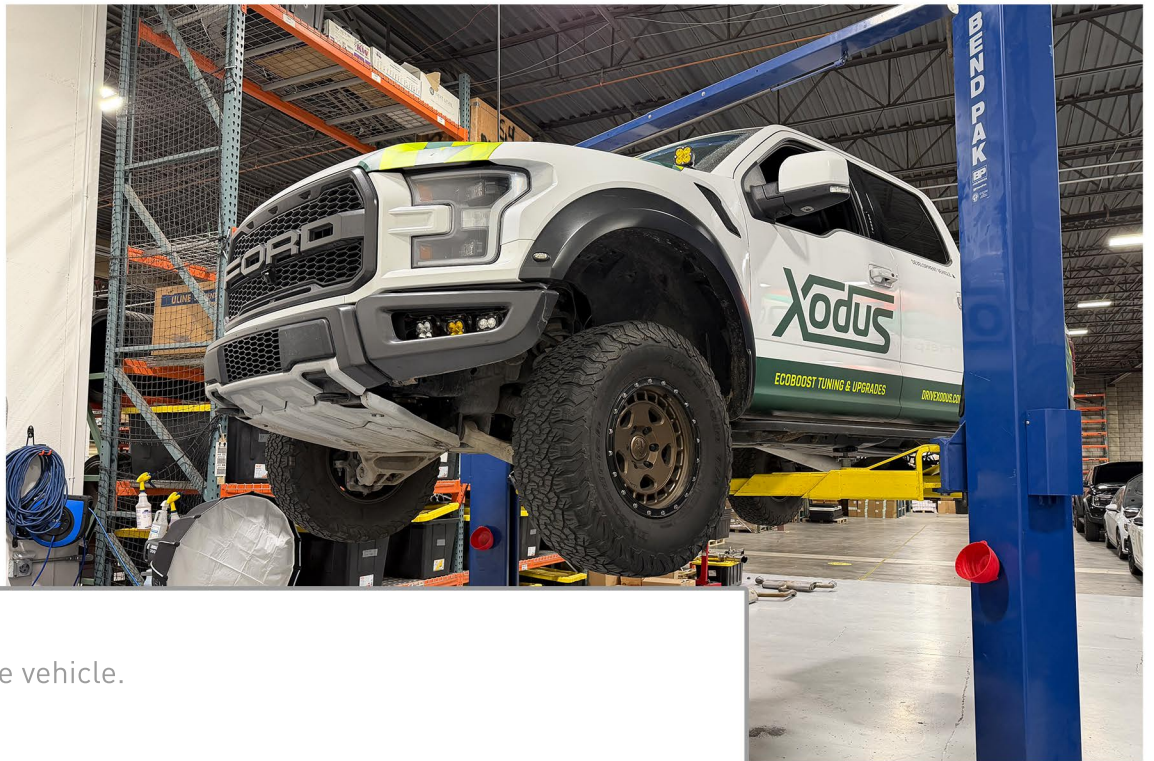
01 - 1/16" NPT PLUG - COMPACT EXTREME-PRESSURE STEEL PIPE FITTING (2X)

02 - F-150 CATALYTIC CONVERTER STUD (4X)

03 - F-150 POWERMAX TURBO ADAPTER GASKET (2X)

Some items may be partially assembled.

1



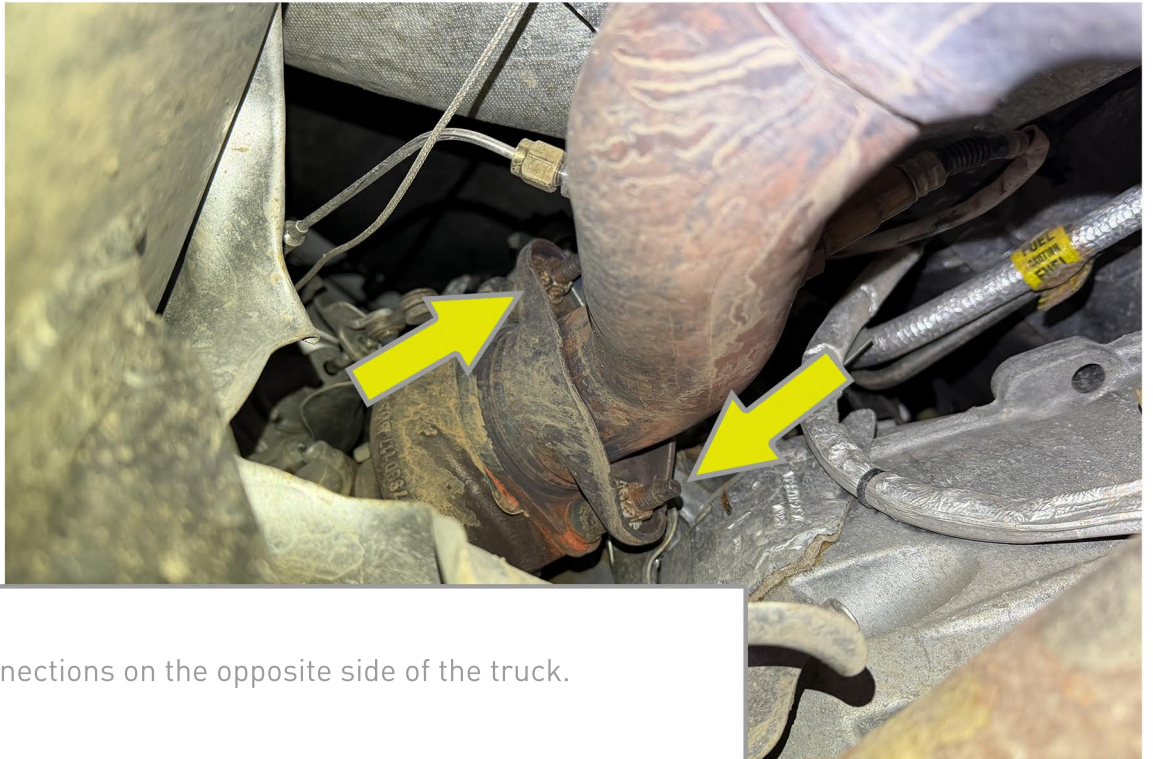
Safely jack up the vehicle.

2a



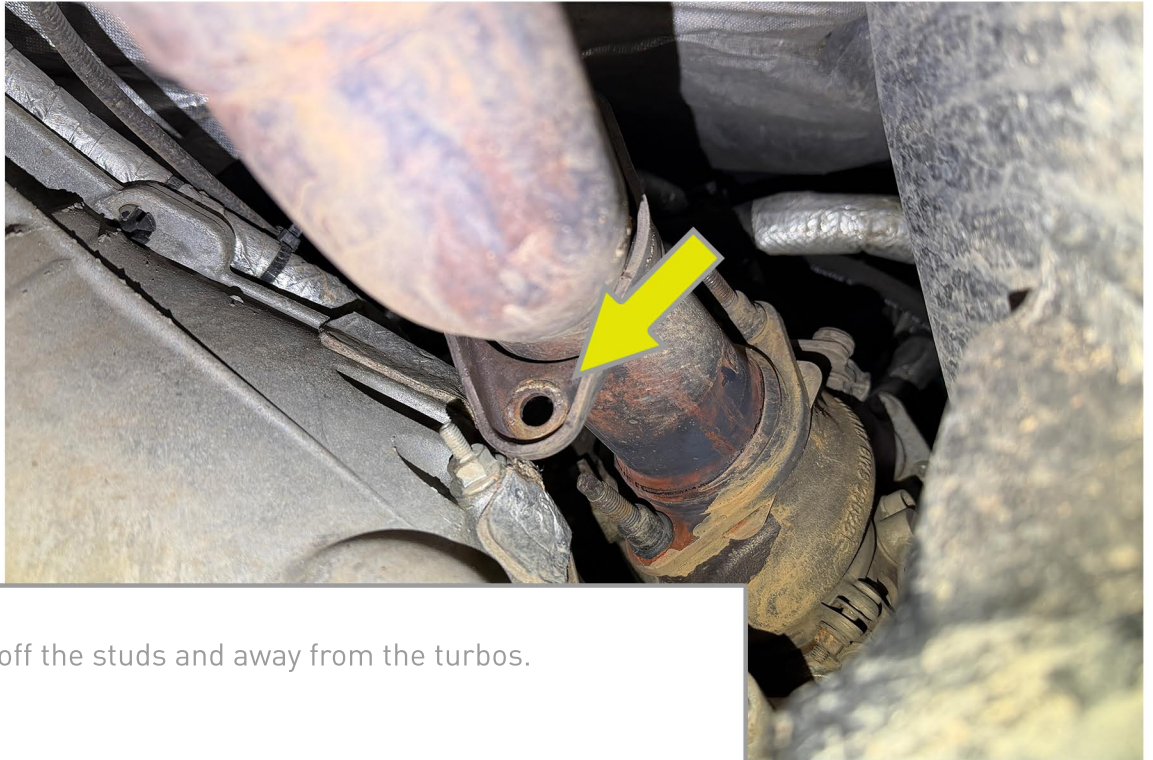
Remove the two 15mm nuts connecting the downpipes to the turbos on both sides of the truck.

2b



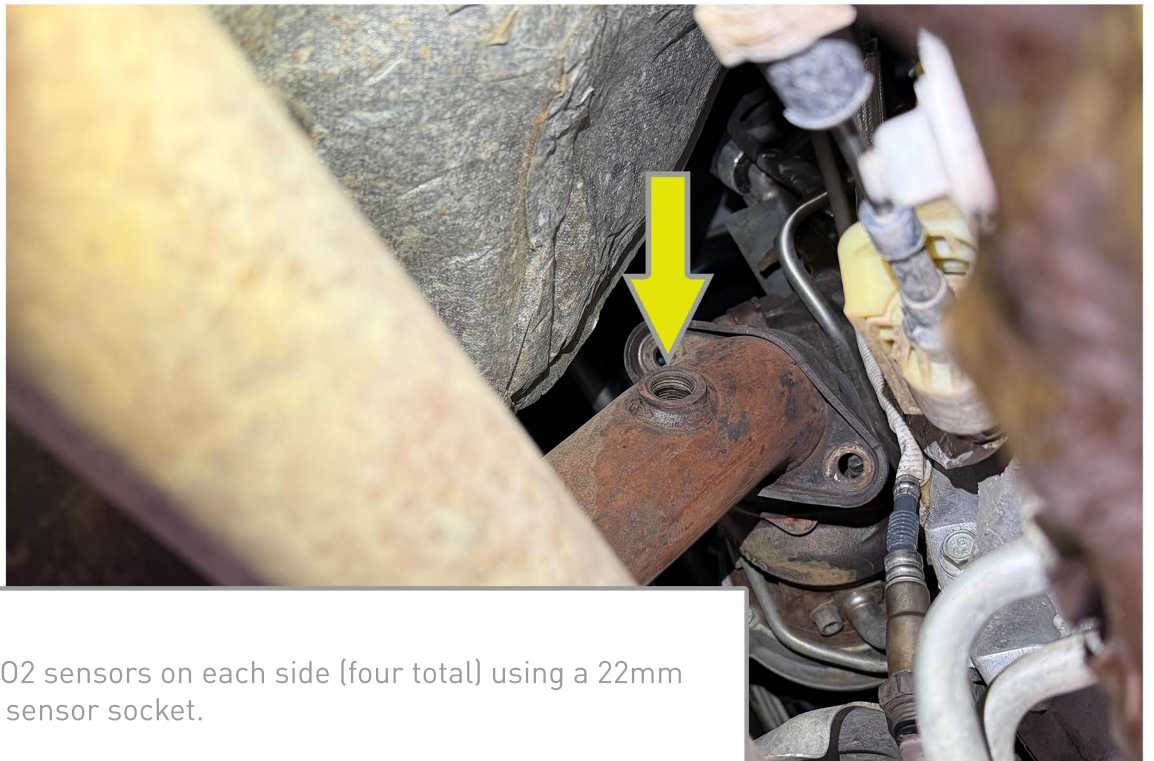
Locating the connections on the opposite side of the truck.

3



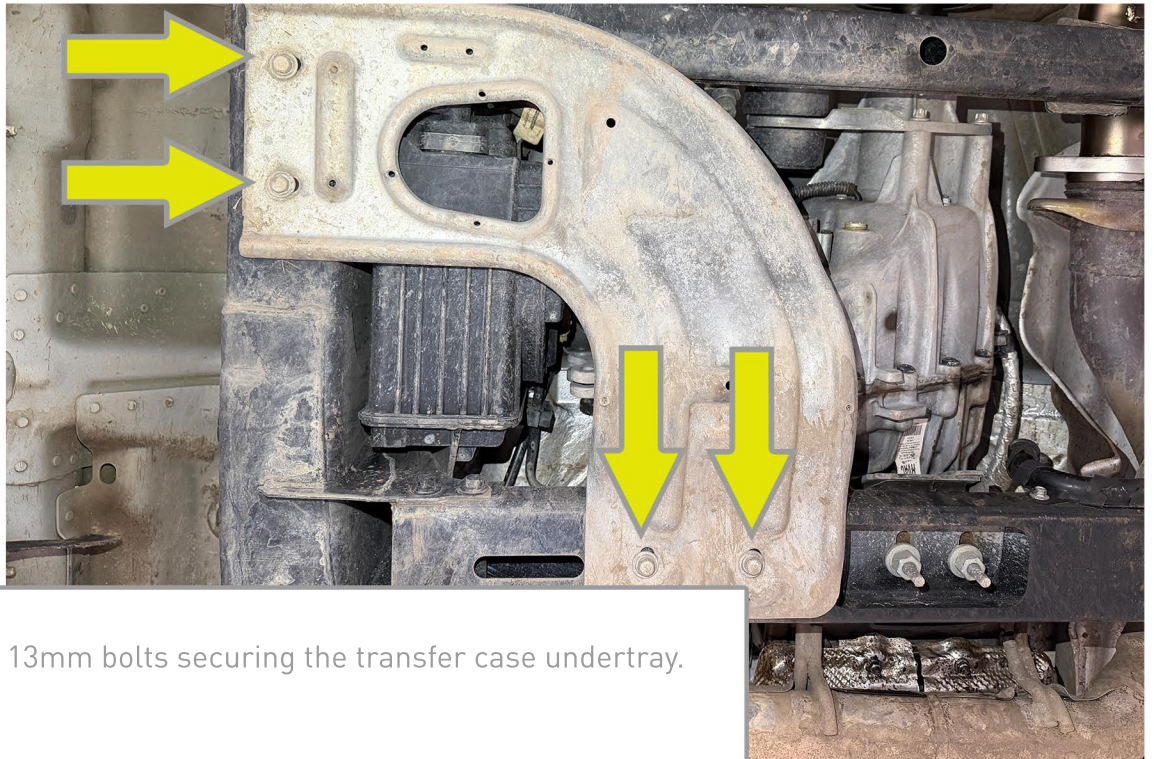
Pull the flanges off the studs and away from the turbos.

4



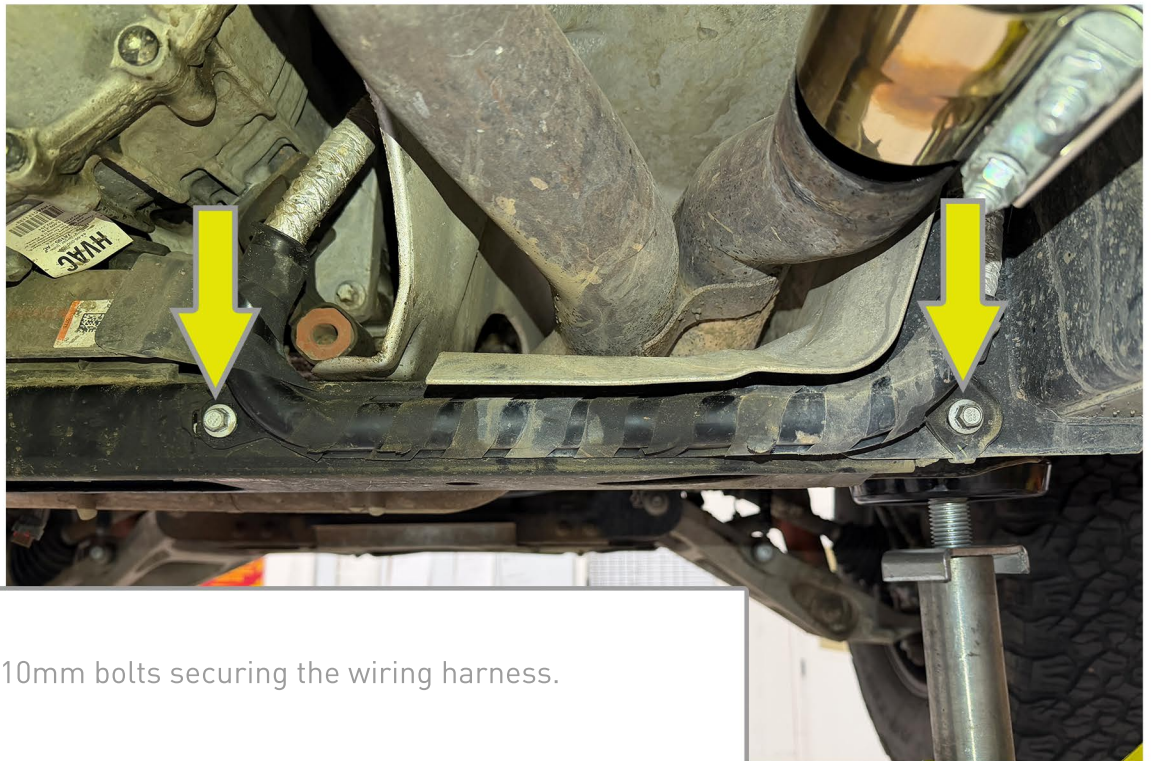
Remove the two O2 sensors on each side (four total) using a 22mm wrench or an O2 sensor socket.

5



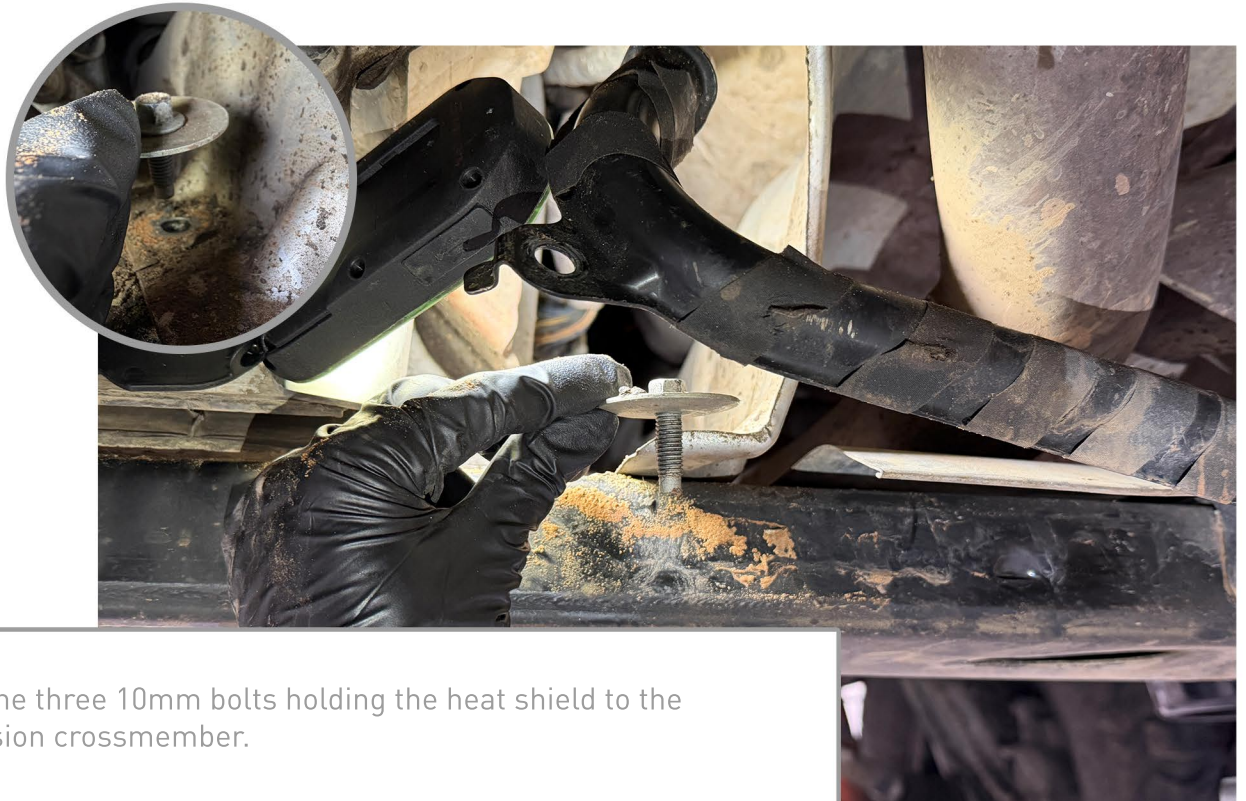
Remove the four 13mm bolts securing the transfer case undertray.

6



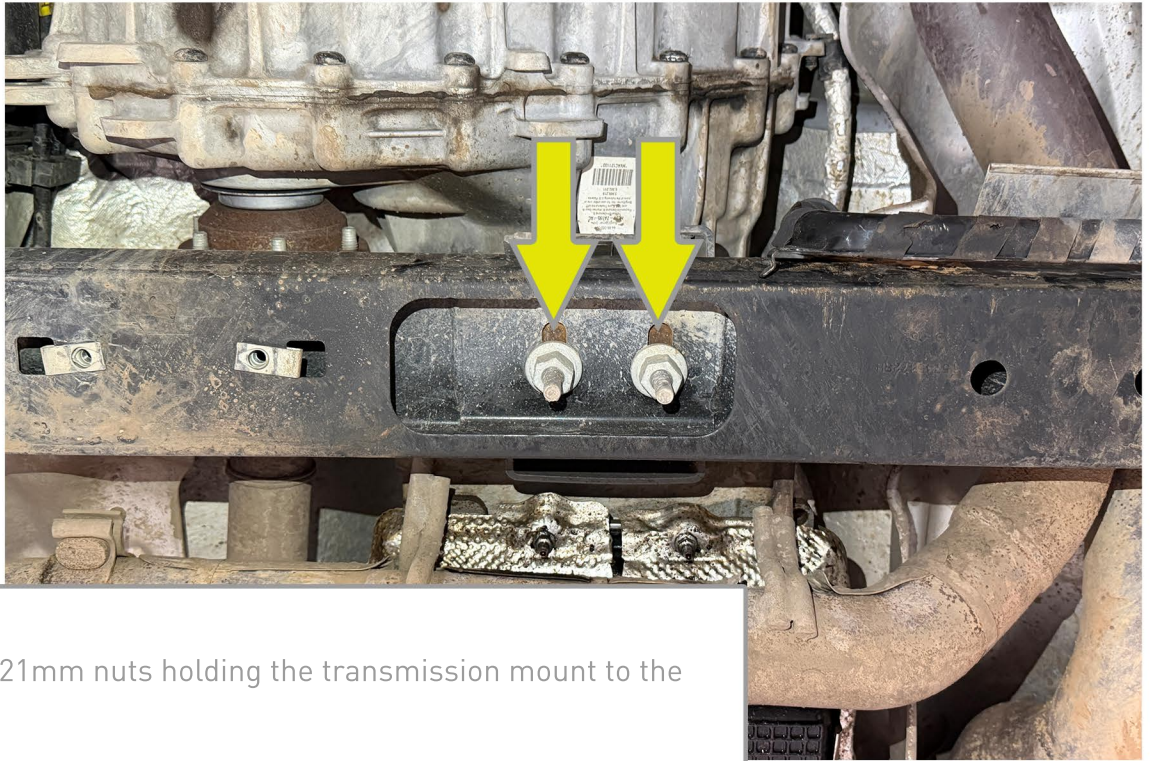
Remove the two 10mm bolts securing the wiring harness.

7



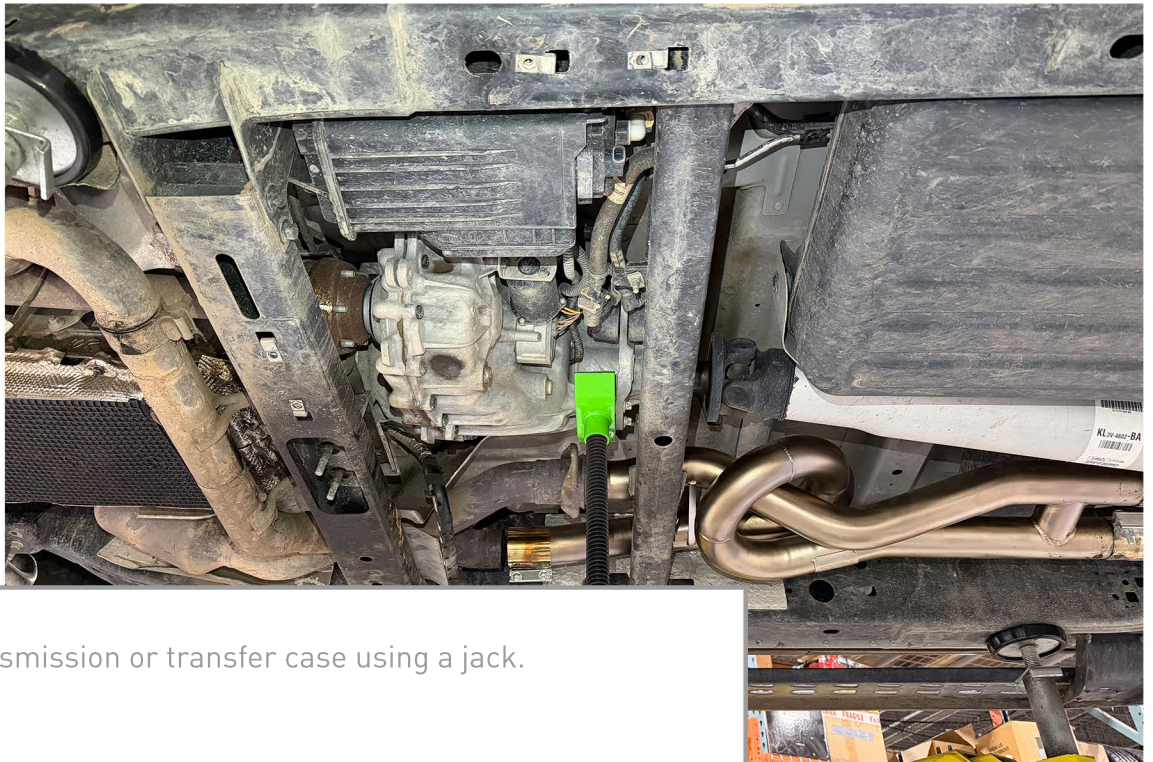
Remove the three 10mm bolts holding the heat shield to the transmission crossmember.

8



Remove the two 21mm nuts holding the transmission mount to the crossmember.

9



Support the transmission or transfer case using a jack.

10a



Remove the four 15mm bolts while counter-holding the 18mm nuts  
(Pictured from passenger side)

10b



Here is an additional angle of the bolts, showing the driver side.

10c



Remove crossbolt.

11



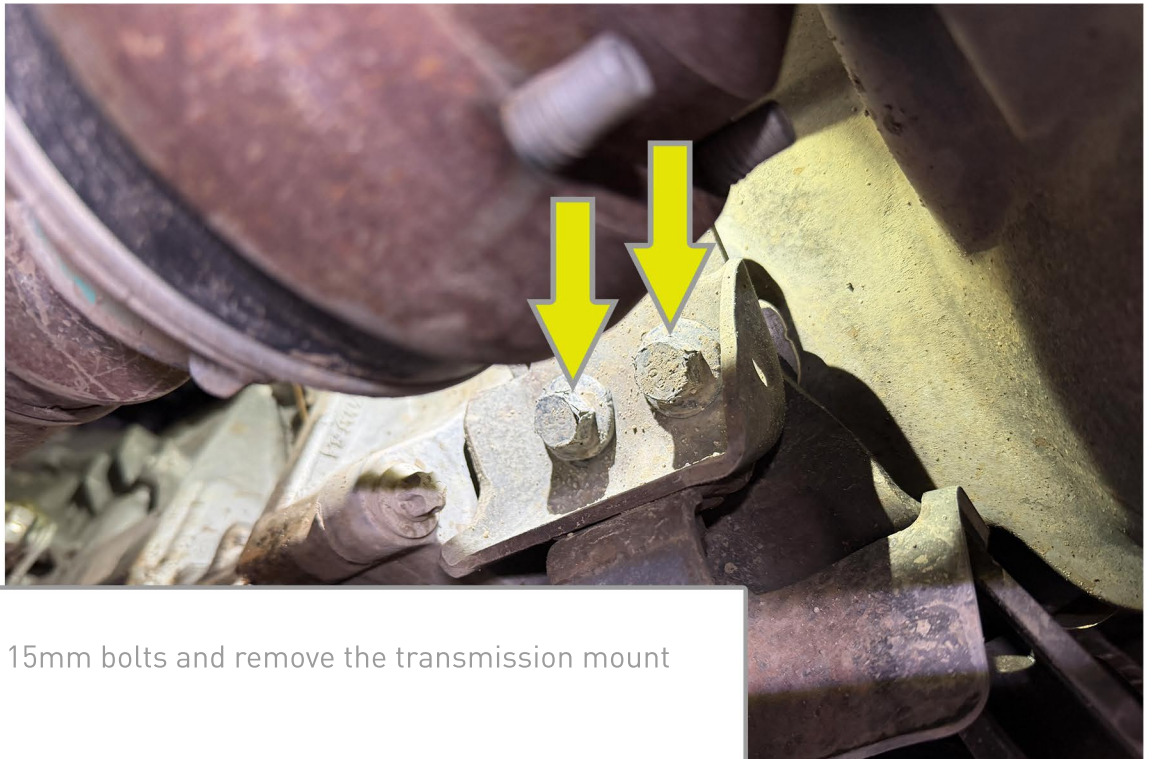
Remove the 10mm nut on the heat shield and remove the heat shield.

12



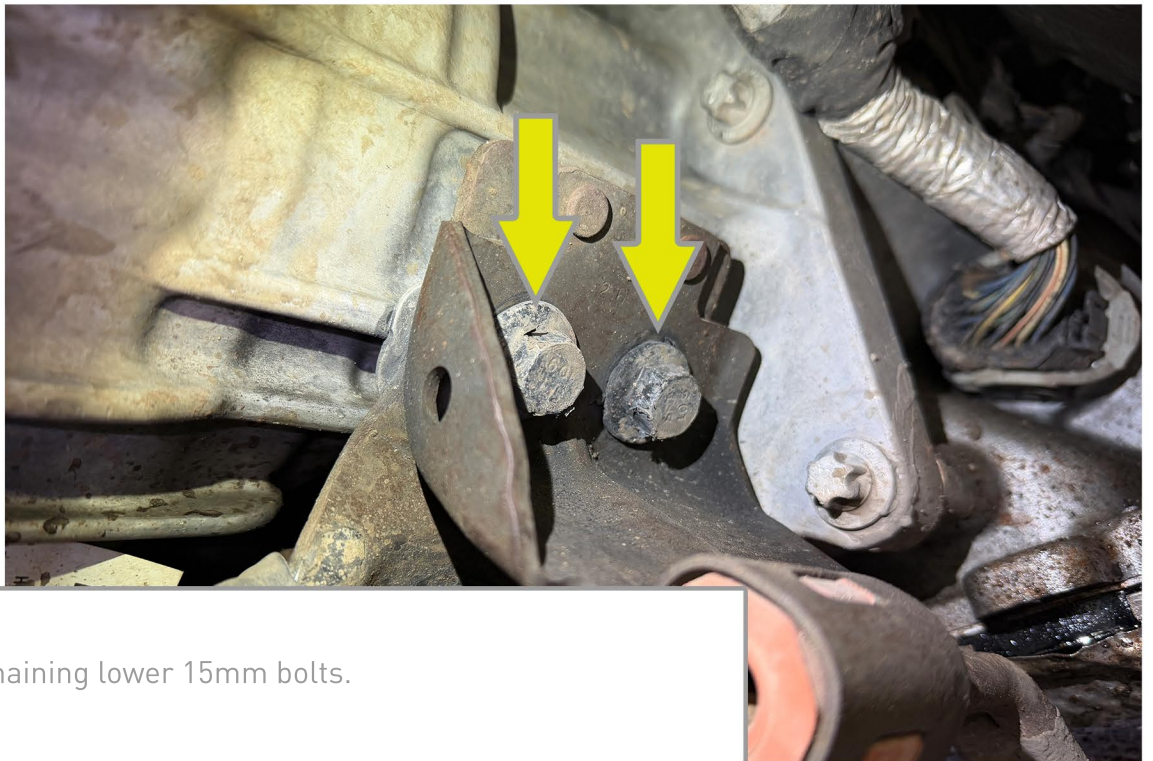
Remove the 15mm bolt and detach the top portion of the exhaust hanger.

13a



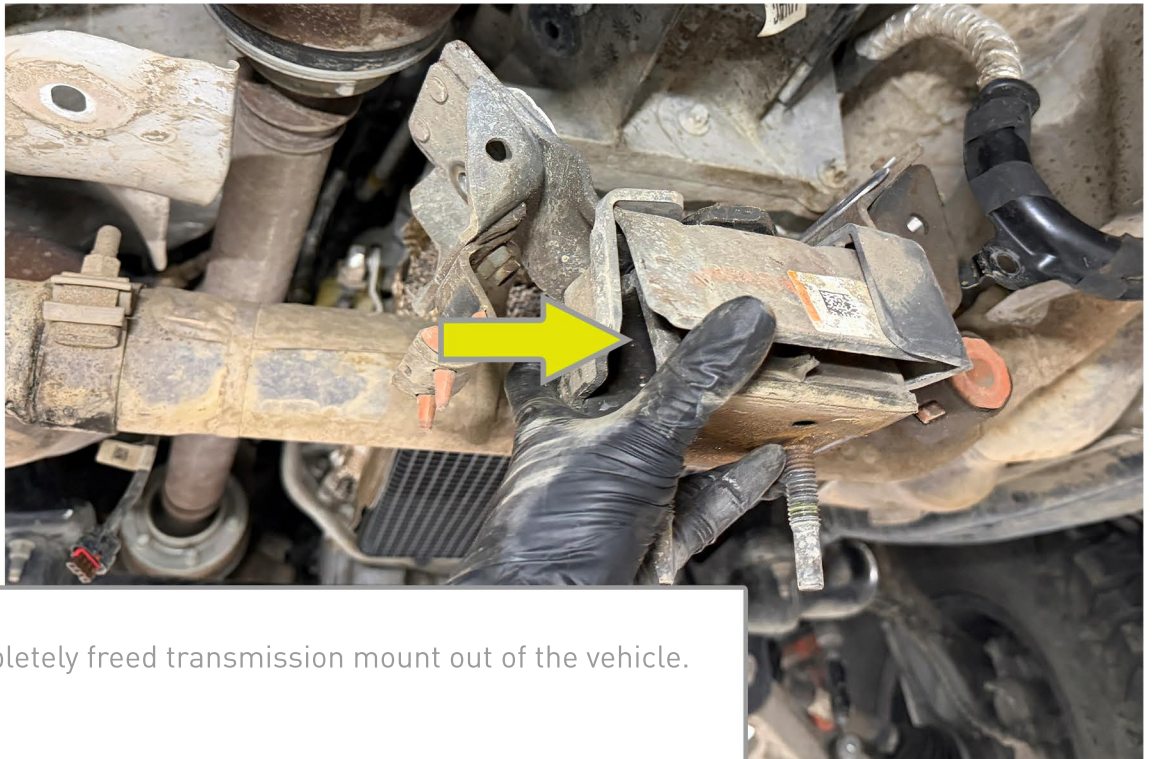
Remove the four 15mm bolts and remove the transmission mount from the vehicle.

13b



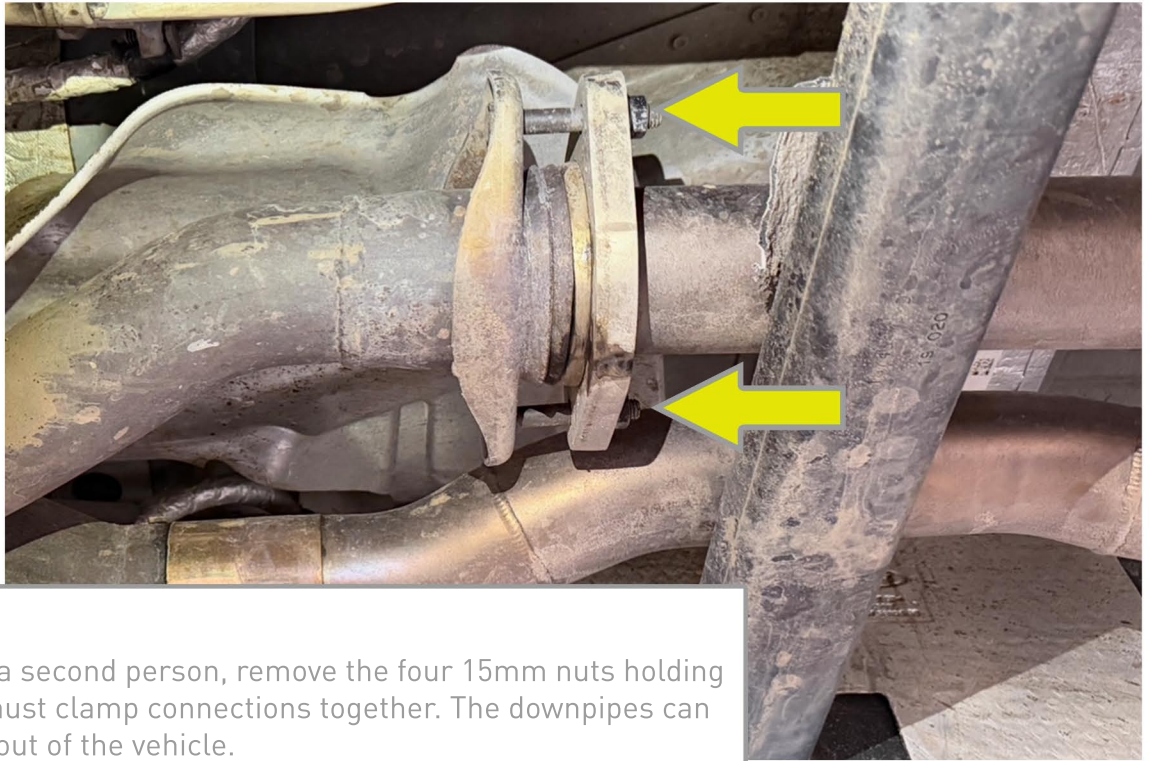
Locating the remaining lower 15mm bolts.

13c



Pulling the completely freed transmission mount out of the vehicle.

14a



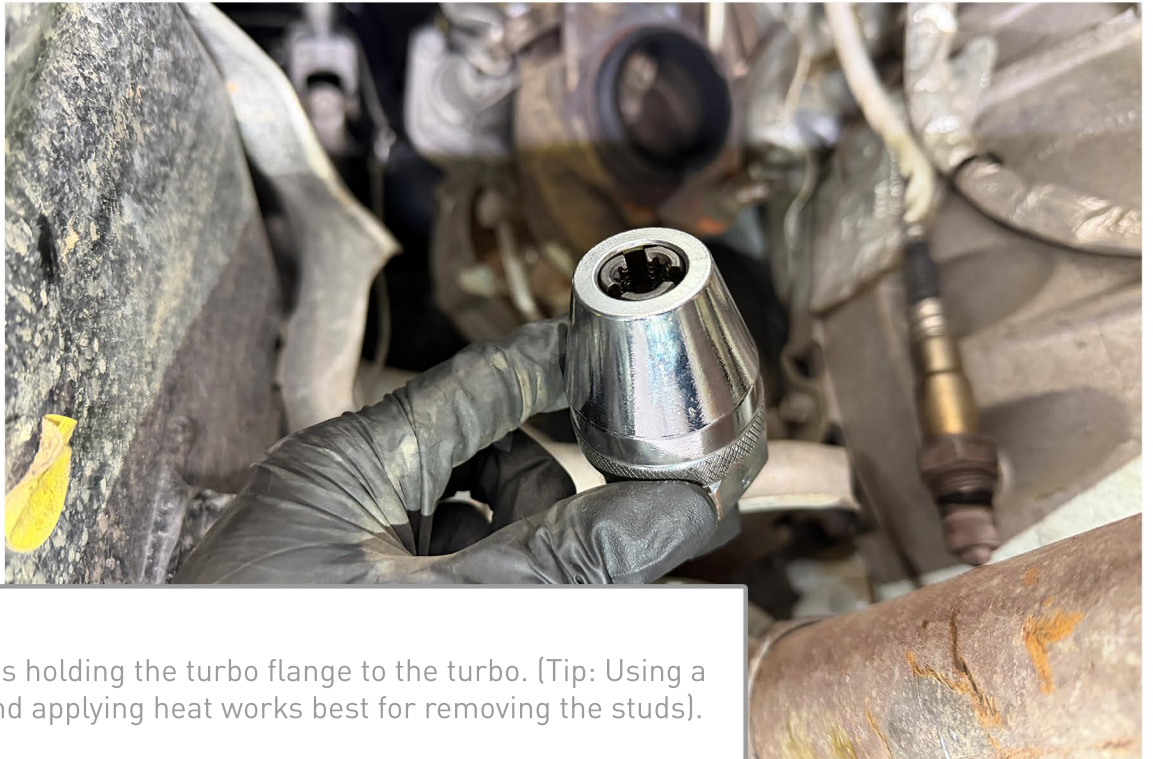
With the help of a second person, remove the four 15mm nuts holding the last two exhaust clamp connections together. The downpipes can now be lowered out of the vehicle.

14b



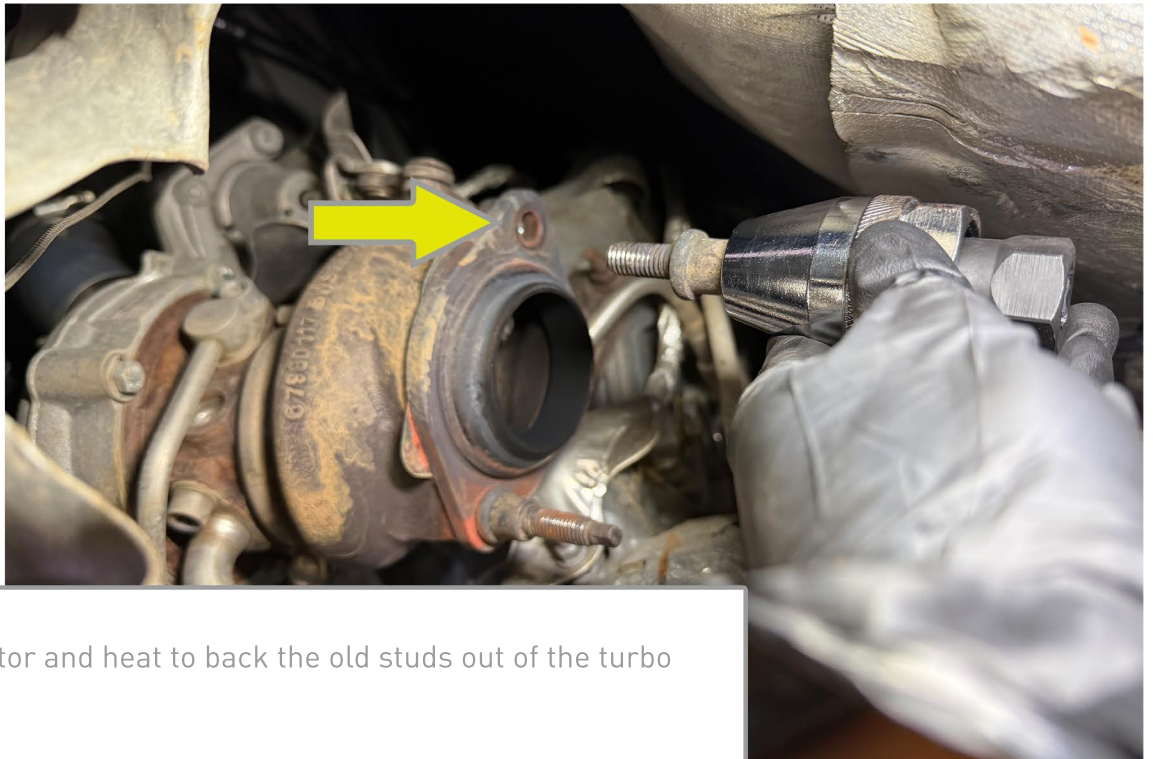
The complete downpipe assembly safely lowered out of the vehicle.

15a



Remove the studs holding the turbo flange to the turbo. (Tip: Using a stud extractor and applying heat works best for removing the studs).

15b



Using the extractor and heat to back the old studs out of the turbo housing.

16



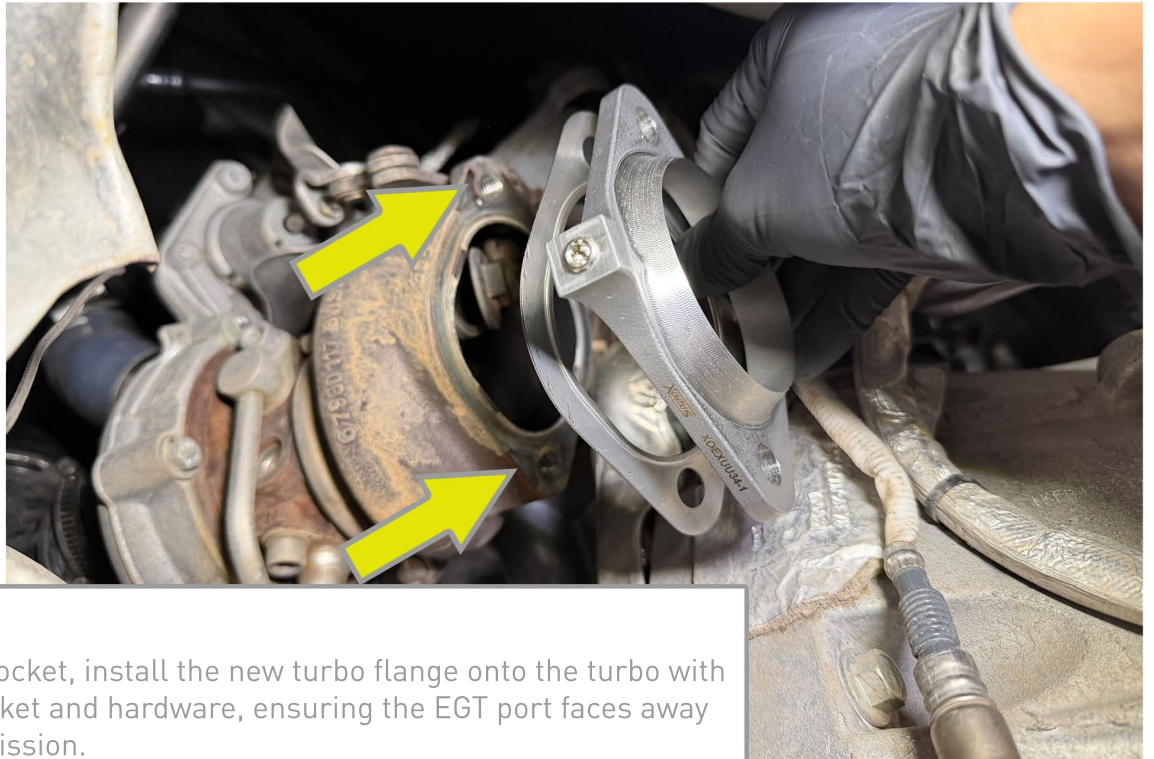
Remove the old turbo flange and gasket from the turbo.

17



Assemble the Xodus turbo flange by installing an EGT sensor or the supplied EGT port plug, depending on your application, using a 4mm Allen wrench.

18



Using a 14mm socket, install the new turbo flange onto the turbo with the supplied gasket and hardware, ensuring the EGT port faces away from the transmission.

19



Once the flanges are installed, follow these steps in reverse order to reassemble the vehicle.



# ENJOY!

**Thank you** for purchasing an Integrated Engineering product. We are dedicated to serving your performance needs. Please check our website frequently for new product releases. If you have any questions or concerns about this product please do not hesitate to contact us.

# Xodus

+1 (833) 985 7050

[WWW.DRIVEXODUS.COM](http://WWW.DRIVEXODUS.COM)

[Help@DriveXodus.com](mailto:Help@DriveXodus.com)

