



INSTALLATION GUIDE

Xodus 13th/14th Gen F-150 Leveling Kit

XOSSFA1

Help@DriveXodus.com

DriveXodus.com



This installation guide is for instructional purposes only. For best results, professional installation by an experienced technician is always recommended. By reading this guide you agree Integrated Engineering is not responsible for any damage caused by incorrect installation.

DIFFICULTY



Expect 3 Hours on average

REQUIRED PARTS

- No additional parts are required for this install

REQUIRED TOOLS

- 21, 18, 27 mm sockets and wrench
- Paint Marker
- Prybar
- Mallet
- Spring Compressor, 6mm Allen (if equipped with Adaptive Susp.)

BEFORE YOU BEGIN

It is highly recommended to pre-read this entire guide ahead of your installation to familiarize yourself with each step. Always park your vehicle in a safe and level location and allow plenty of time for the engine bay and exhaust to completely cool. Locate and prepare your work space with each required tool listed above. Unbox all components and verify the contents and quantities before you begin. If anything is missing or damaged, please contact us for immediate help at help@drivexodus.com

SPECIAL NOTE:

This install guide has been photographed and written on a 2023 F150 Powerboost. Some steps and factory hardware specifications may vary depending on vehicle model, year, and region. This guide is for reference purposes only. If you are unsure of the installation procedure for any individual step or part, please seek professional help before proceeding.

INCLUDED PARTS

01 - XOSSFA1 Spacer (2)

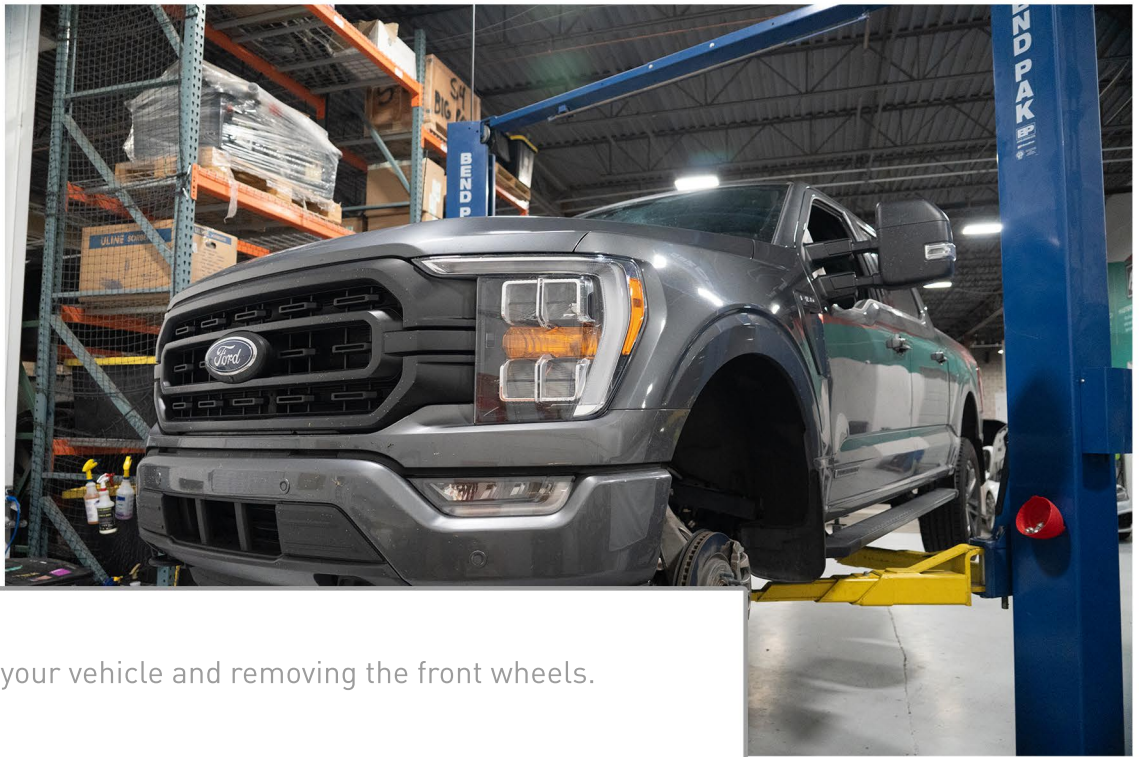
02 - Class 10.9 M10 X 1.5MM - 40 MM LONG, High-Strength Steel Threaded Rod (6)

03 - CLASS 10 ZINC YELLOW-CHROMATE PLATED, M10 X 1.5MM THREAD,High-Strength Nylon-Insert Flange Locknut (6)



Some items may be partially assembled.

1



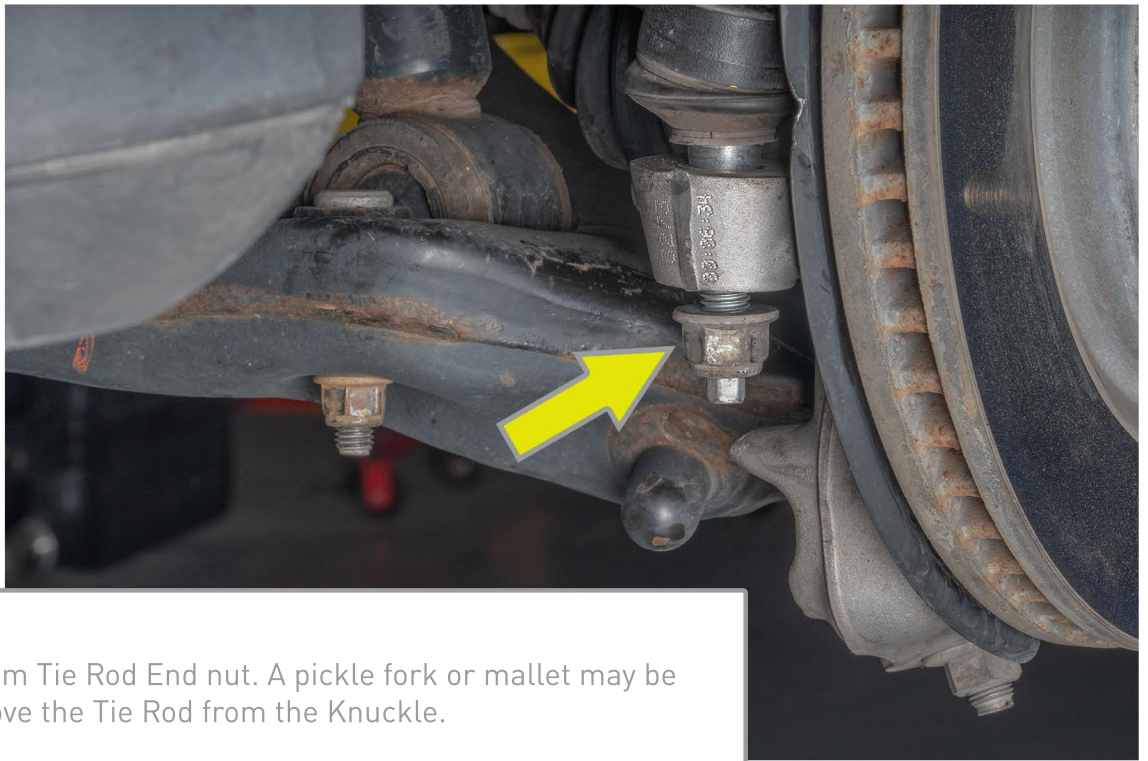
Begin by raising your vehicle and removing the front wheels.

2



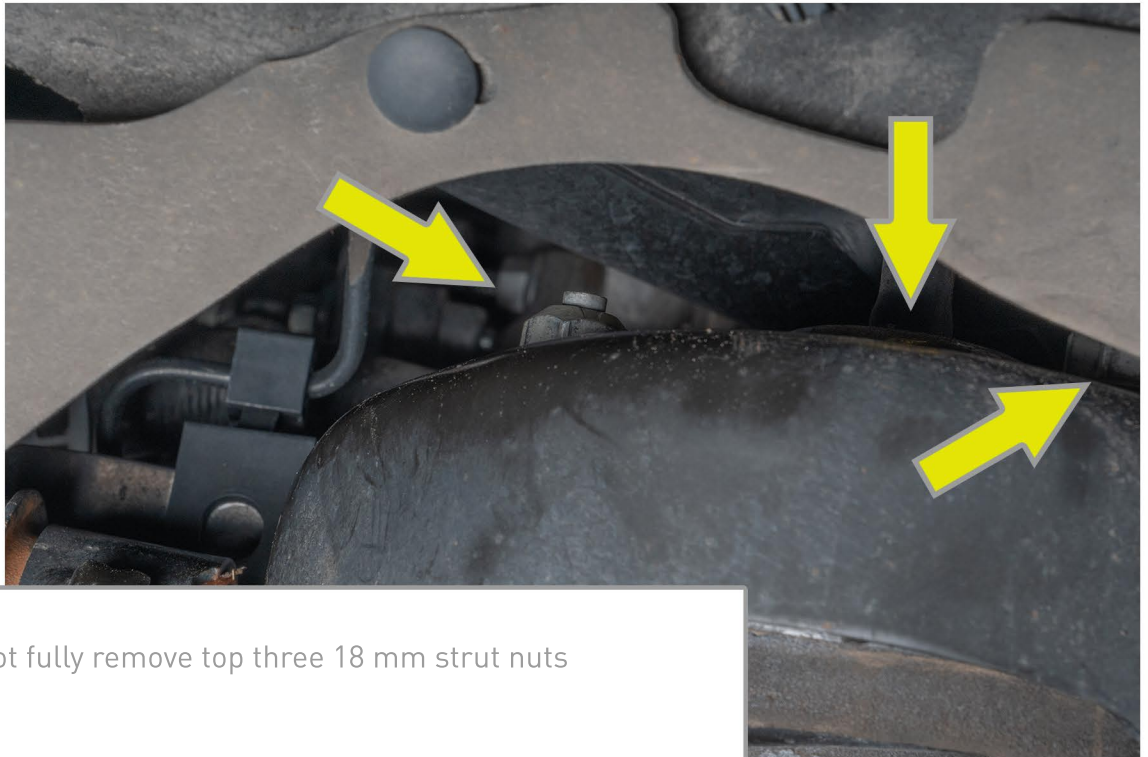
Remove the upper 21mm Sway Bar end link nut

3



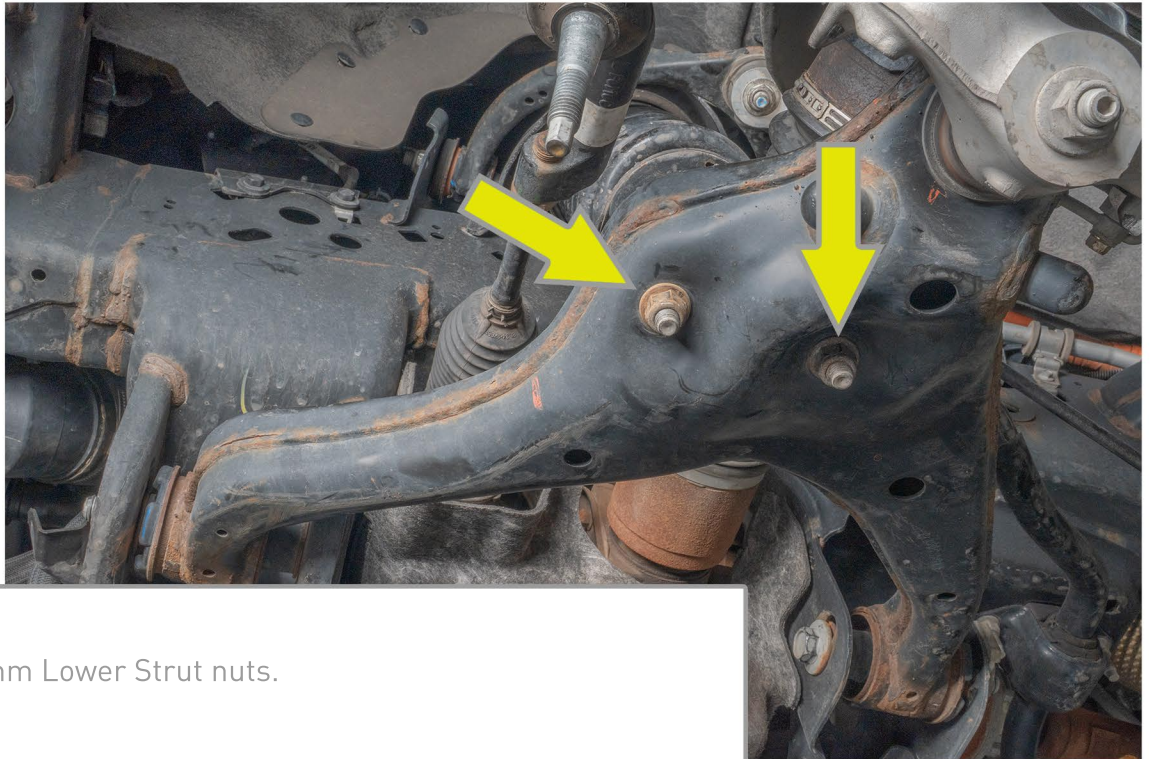
Remove the 21mm Tie Rod End nut. A pickle fork or mallet may be required to remove the Tie Rod from the Knuckle.

4



Loosen but do not fully remove top three 18 mm strut nuts

7



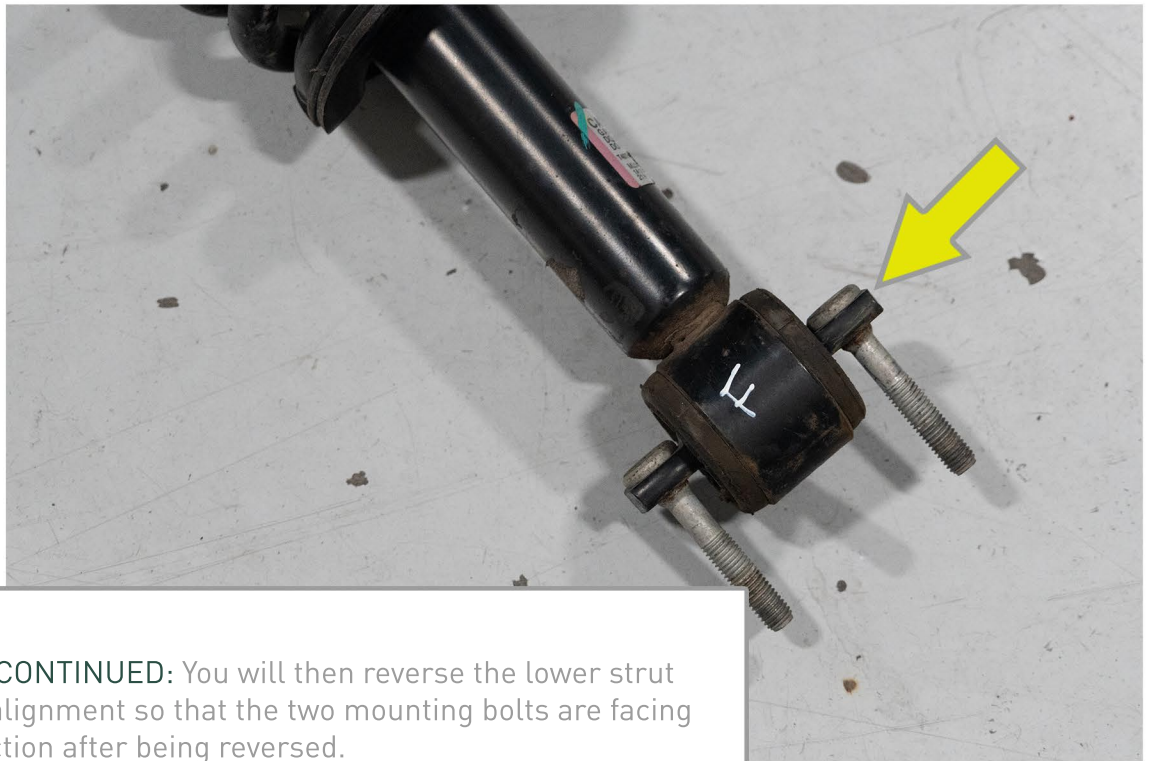
Remove two 18mm Lower Strut nuts.

8



You are now going to use a paint marker to mark (will help in aiding realigning enough to drive it to the alignment shop) then remove the both lower control arm bolts while holding the eccentric nut in place. Eccentric nut is 27mm the bolt is 21mm.

11



NON ADAPTIVE CONTINUED: You will then reverse the lower strut mount bushing alignment so that the two mounting bolts are facing the correct direction after being reversed.

12



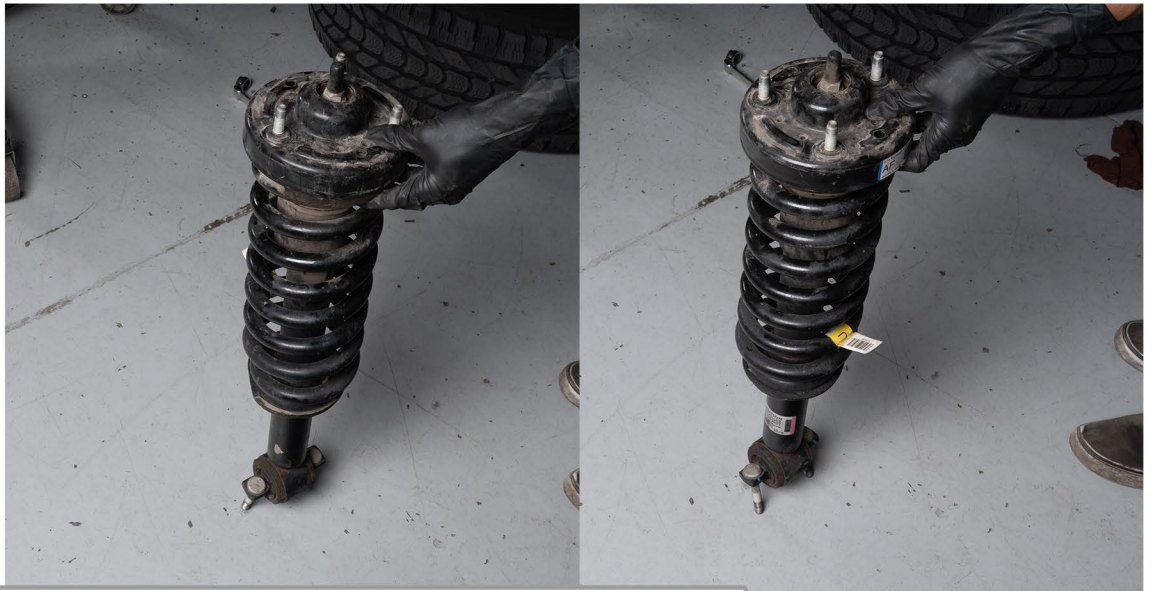
IF YOU HAVE ADAPTIVE SUSPENSION: You will need to use a spring compressor to loosen the 17mm top hat nut (6mm Allen to hold the shaft) enough to rotate in on top of the spring 180°. Marking the top hat can aid in aligning it correctly.

9



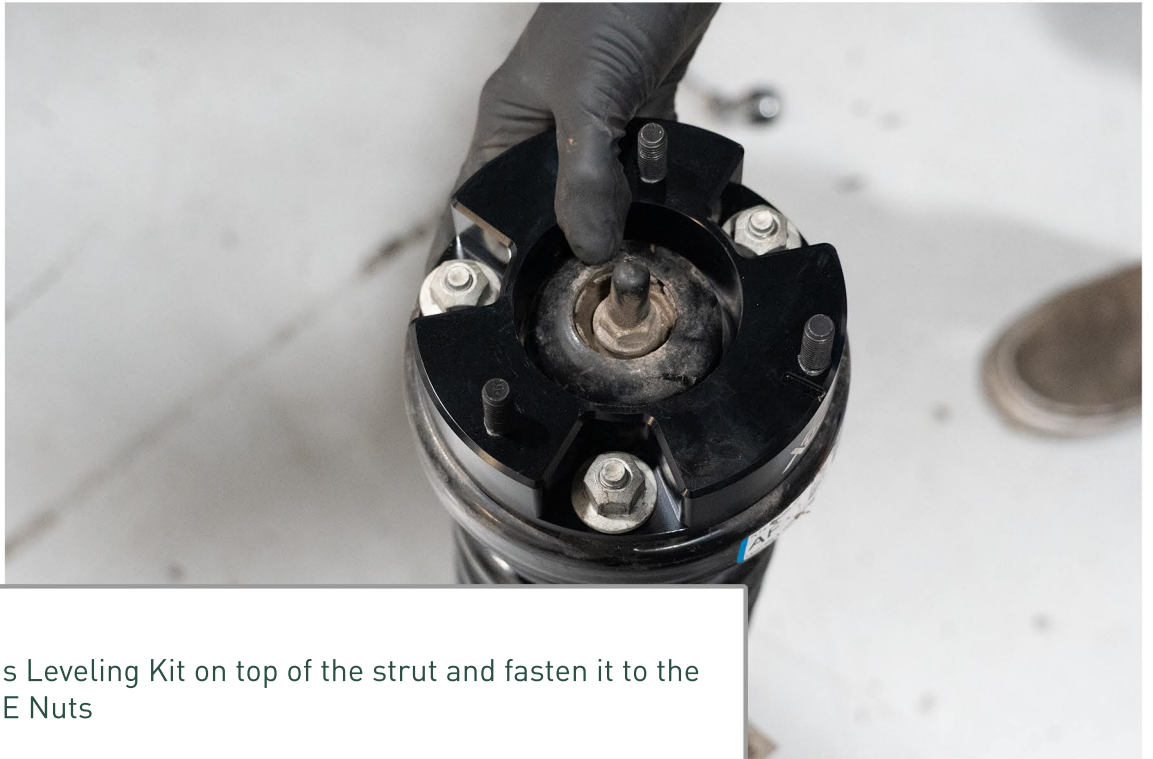
Remove the top three strut bolts. Be ready for the strut to drop out. Take note of the orientation of the strut before you drop it out. You can even mark the top hat and lower strut mount with a paint marker to know which side was facing outward. Note that you may need to apply upward pressure on the knuckle to allow clearance for the strut.

10



Once the strut is out, if you have **NON ADAPTIVE** suspension, simply rotate the strut 180° From it's Original orientation.

13



Install your Xodus Leveling Kit on top of the strut and fasten it to the strut using the OE Nuts

14



Reinstall the shock in reverse order from removal. Ensure your lower control arm bolts/excentric nuts are set back to the markings, then get your truck to an alignment shop to finalize install.



ENJOY!

Thank you for purchasing an Integrated Engineering product. We are dedicated to serving your performance needs. Please check our website frequently for new product releases. If you have any questions or concerns about this product please do not hesitate to contact us.

Xodus

+1 (833) 985 7050

WWW.DRIVEXODUS.COM

Help@DriveXodus.com

