

PERFORMANCE BY



INSTALLATION GUIDE

iE Aluminum Valve Covers For Audi B8 S4, S5, SQ5 3.0T Engines

IEBACG2



This installation guide is for instructional purposes only. For best results, professional installation by an experienced technician is always recommended. By reading this guide you agree Integrated Engineering is not responsible for any damage or personal injury caused by incorrect installation.

DIFFICULTY



Expect 2 Hours on average

REQUIRED PARTS

- No additional parts are required for this install

REQUIRED TOOLS

- 10mm Socket
- T25 Socket
- Torque Wrench
- Wobble Socket

OPTIONAL PARTS

BEFORE YOU BEGIN

It is highly recommended to pre-read this entire guide ahead of your installation to familiarize yourself with each step. Always park your vehicle in a safe and level location and allow plenty of time for the engine bay and exhaust to completely cool. Locate and prepare your work space with each required tool listed above. Unbox all components and verify the contents and quantities before you begin. If anything is missing or damaged, please contact us for immediate help at support@performancebyie.com

SPECIAL NOTE:

This install guide has been photographed and written on a 2014 Audi S4. Some steps and factory hardware specifications may vary depending on vehicle model, year, and region. This guide is for reference purposes only. If you are unsure of the installation procedure for any individual step or part, please seek professional help before proceeding.



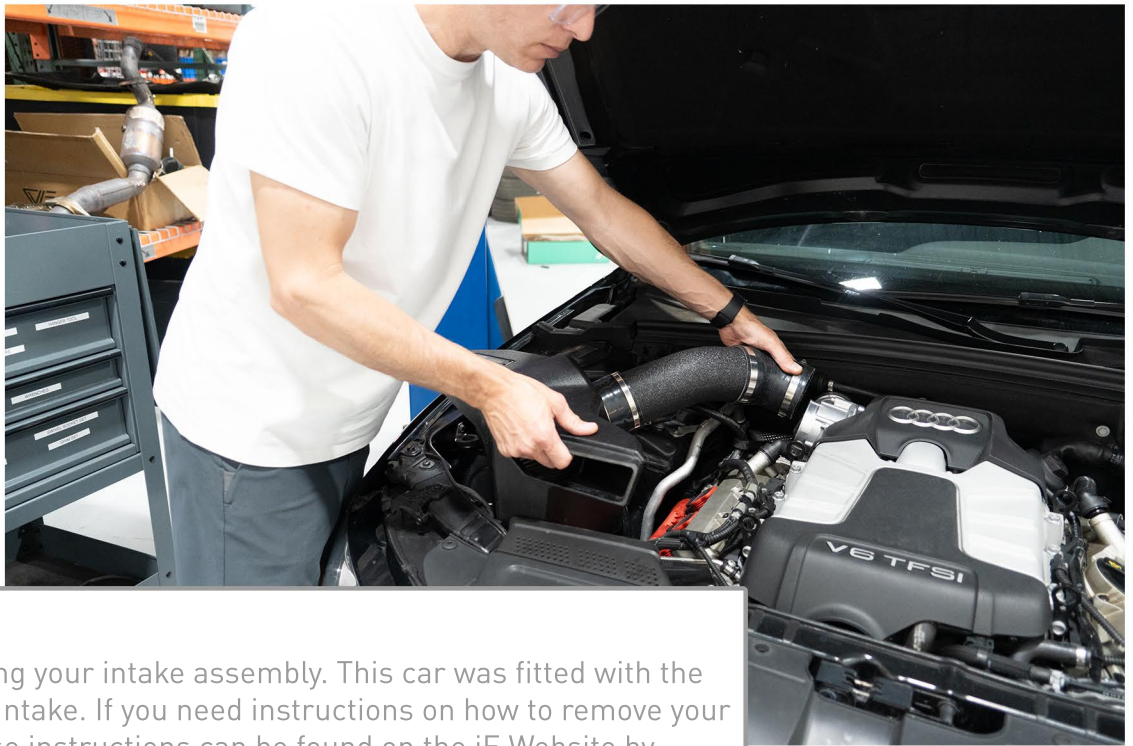
INCLUDED PARTS

- 01 - EA837 Passenger Valve Cover Assembly
- 02 - EA837 Driver Valve Cover Assembly
- 03 - -10 AN Valve Cover Breather Assembly (2x)
- 04 - EA837 OEM Valve Cover Gasket Set
- 05 - EA839 Coil Pack Spacer (4x)
- 06 - 18-8 Stainless Steel Socket Head Screw (4x)
- 07 - Metric DIN 125 18-8 Stainless Steel Flat Washer, M5 Screw (4x)
- 08 - Chemical-Resistant Viton Fluoroelastomer O-Ring

Some items may be partially assembled.



1



Begin by removing your intake assembly. This car was fitted with the iE Performance Intake. If you need instructions on how to remove your OEM intake, those instructions can be found on the iE Website by searching for the "IEINCG5" and downloading that install guide.

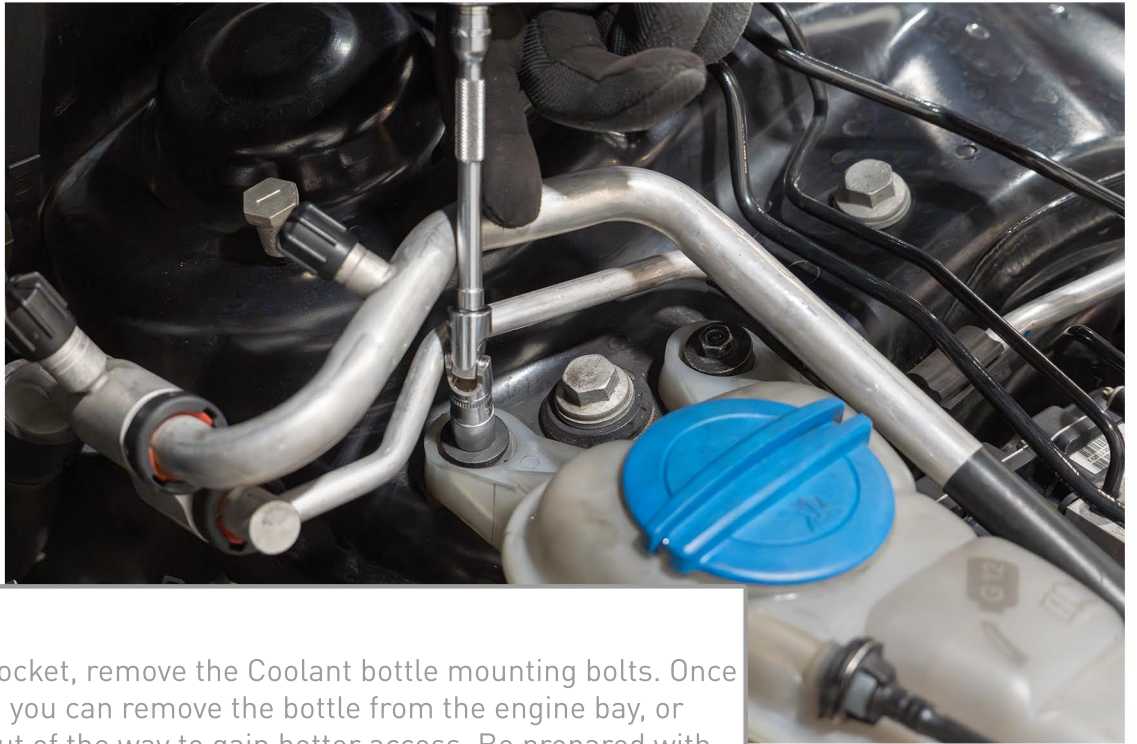
2



Pull up on the retaining clip for the coolant expansion tank. This can be easier with a pick. Once the retaining clip has been pulled up, you can pull the hose off by pulling directly away from the bottle.



3



Using a 10mm Socket, remove the Coolant bottle mounting bolts. Once they're removed, you can remove the bottle from the engine bay, or simply place it out of the way to gain better access. Be prepared with rags if you decide to completely remove it.

4



Remove the two T25 screws that secure the coil pack harness.

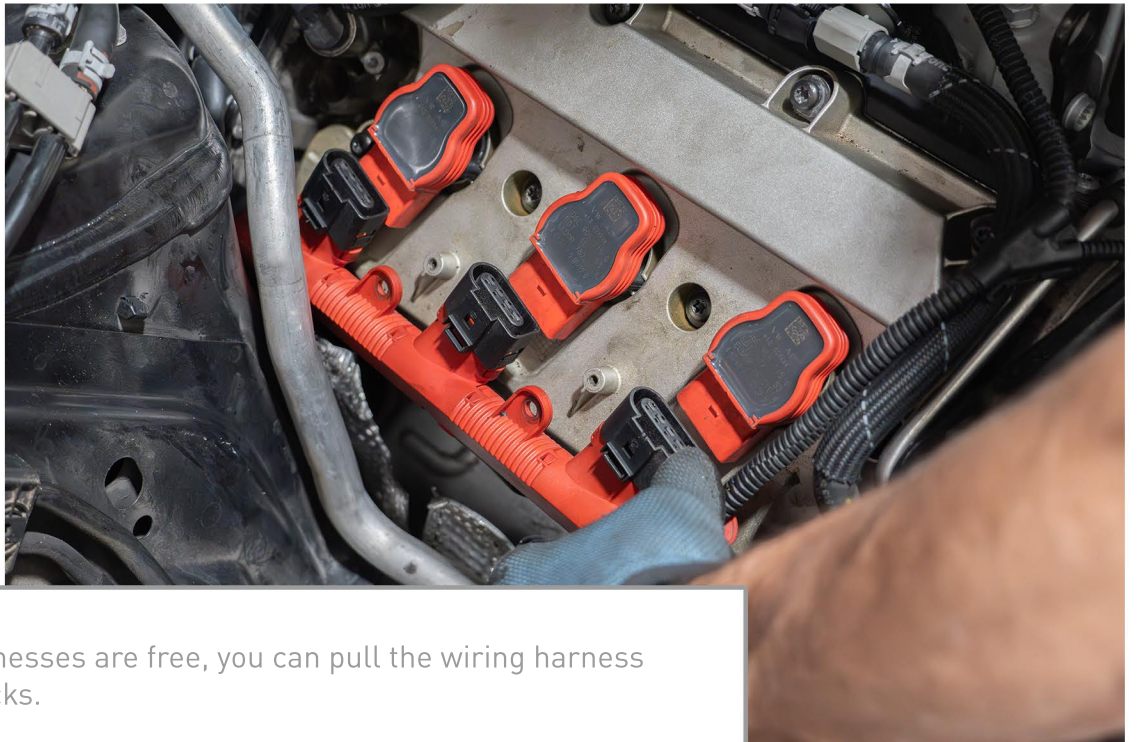


5



Using a flat head or pick, you can pop out the harnesses for the coil packs on both sides.

6



Once all the harnesses are free, you can pull the wiring harness from the coil packs.



7



You can now remove all 6 coil packs.

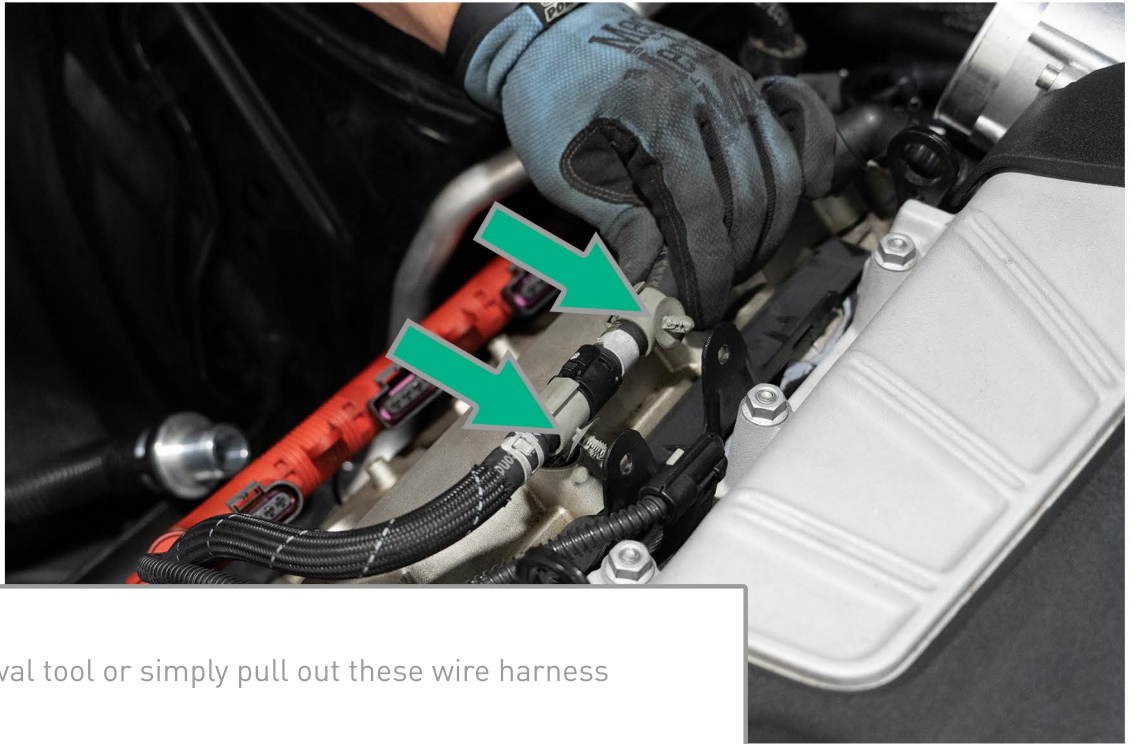
8



Unplug this wiring harness by pulling up, then depressing the gray tab, then pulling out the connector.

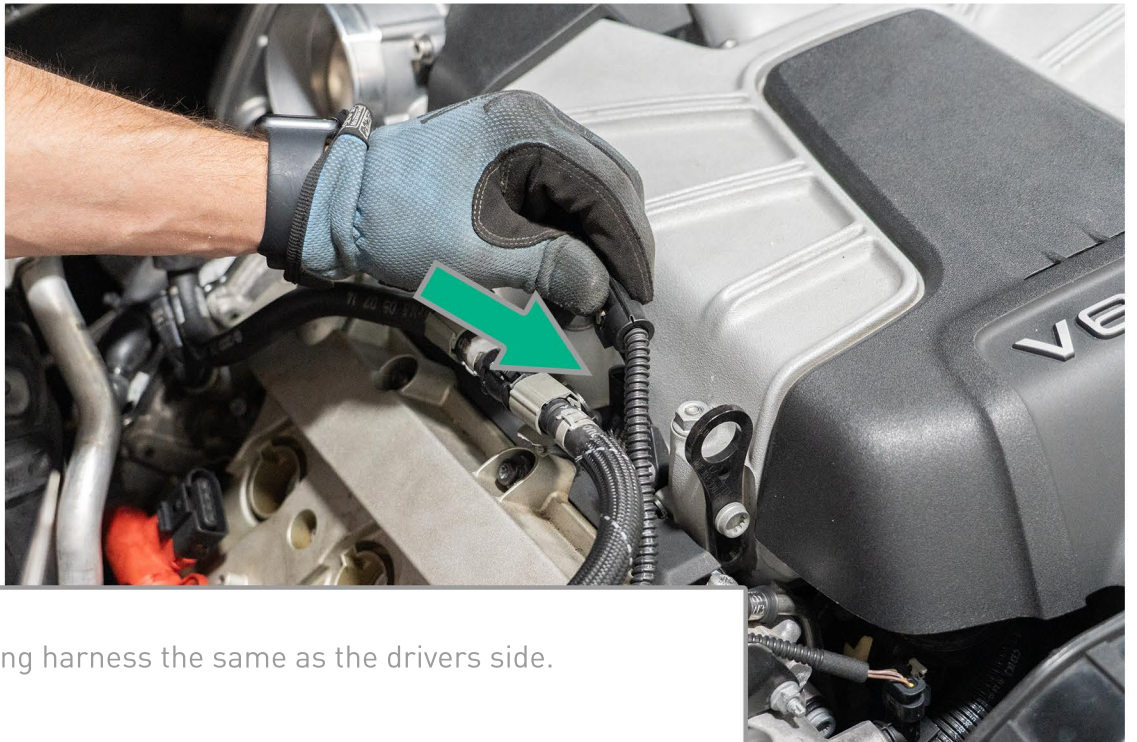


9



Use a trim removal tool or simply pull out these wire harness retainers.

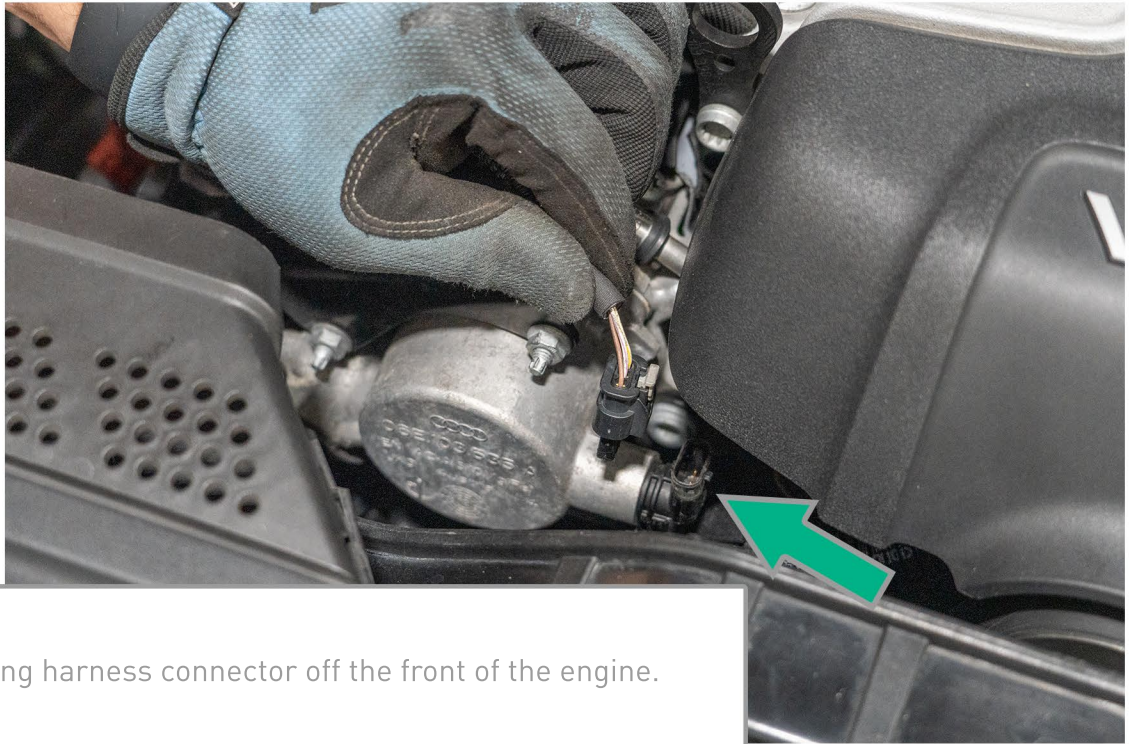
10



Remove this wiring harness the same as the drivers side.

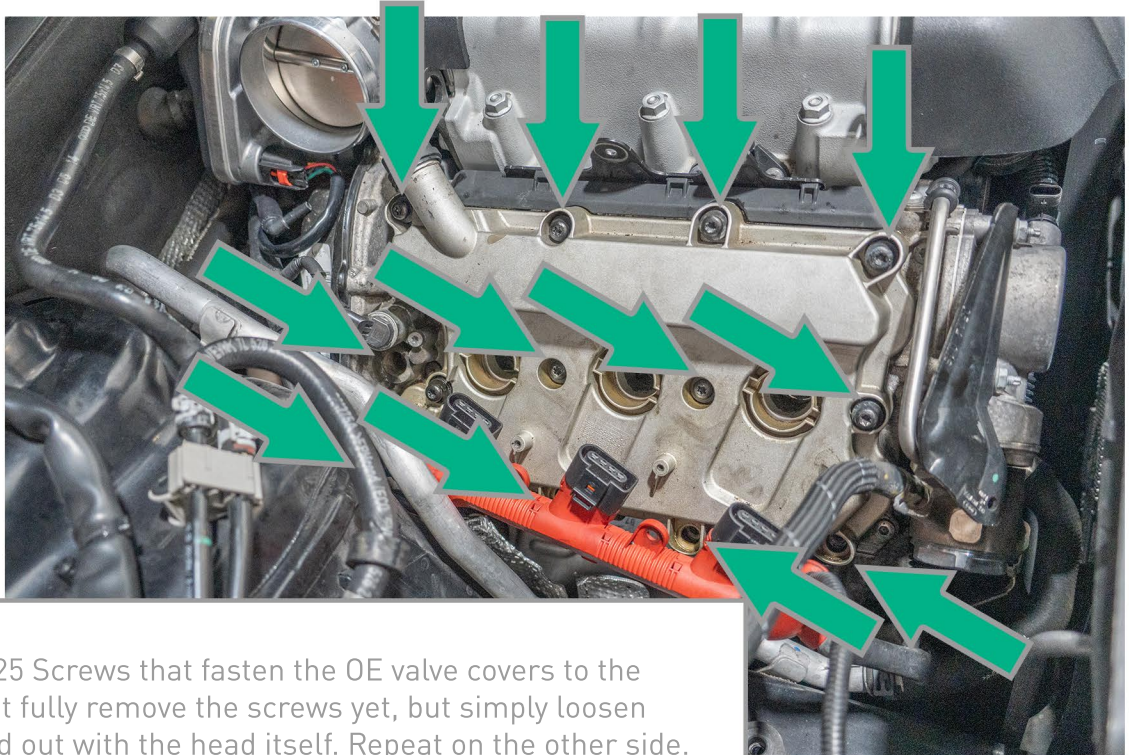


11



Remove this wiring harness connector off the front of the engine.

12



Loosen twelve T25 Screws that fasten the OE valve covers to the head. You will not fully remove the screws yet, but simply loosen them to be pulled out with the head itself. Repeat on the other side. A wobble socket can help with accessing the rear lower screws.



13



Remove both of these breather hose connectors from the valve covers by pinching and pulling away or using a plastic pry tool to get them off the lip of the valve cover. NOTE: These can be very brittle so take your time and don't force anything as they can easily break.

14



You should now be free to pull the OE Valve covers out of the engine bay.



15



Transfer all the retainer screws from your OE valve covers to your new iE Aluminum Valve Covers.

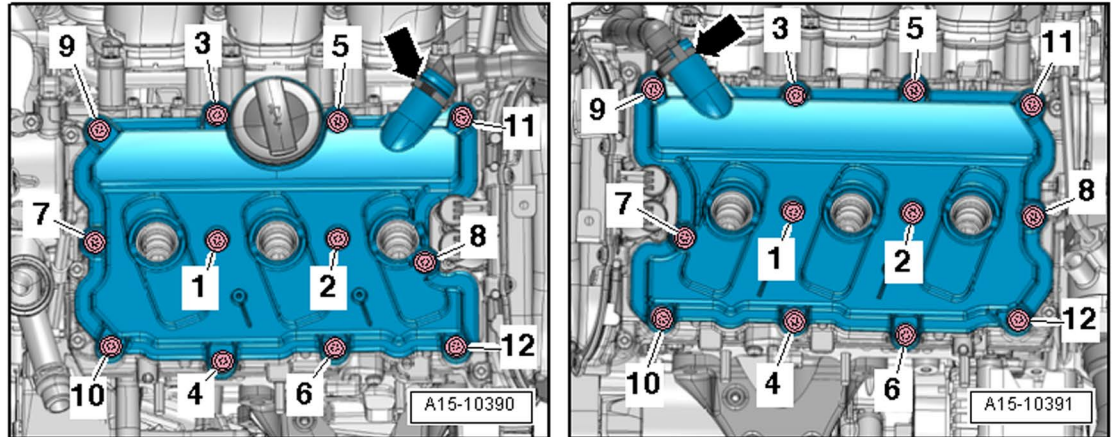
16



Lower your new iE Valve Covers into place. Note that if you desire, you can unscrew the breather hose fitting and use an AN fitting on either or both sides.

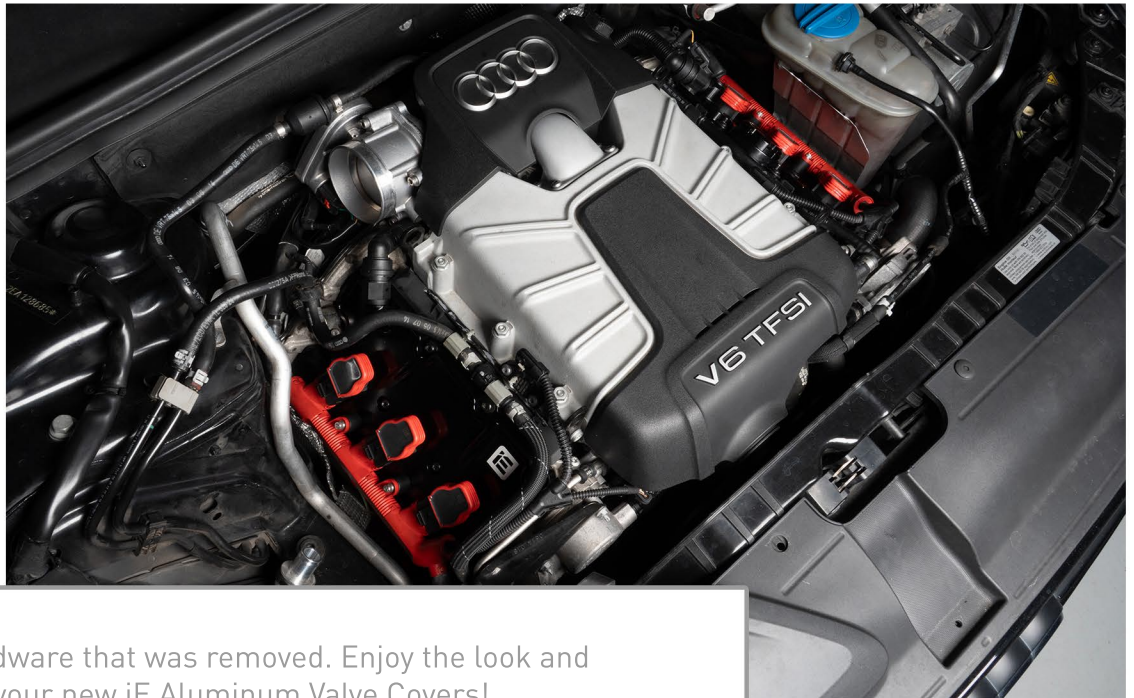


17



Torque the valve covers to 9nm. Do so in the order shown above. Failure to do so can cause leaks or damage to your valve covers.

18



Reinstall all hardware that was removed. Enjoy the look and performance of your new iE Aluminum Valve Covers!



ENJOY!

Thank you for purchasing an Integrated Engineering product. We are dedicated to serving your performance needs. Please check our website frequently for new product releases. If you have any questions or concerns about this product please do not hesitate to contact us.



HOW WAS YOUR INSTALL?



Stoked?

Awesome! Please leave a review.
share.performancebyie.com



Bummed?

Sorry, let us make it right.
support.performancebyie.com



801.484.2021

WWW.PERFORMANCEBYIE.COM

SUPPORT@PERFORMANCEBYIE.COM



Brother owned since 2007.
Garage started for beer money.

performancebyie.com

Don't be shy. Share your project.



#LiveFastBuyFun